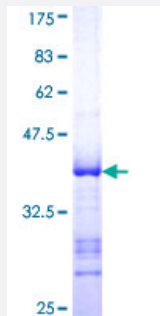


# CITED1 (Human) Recombinant Protein (Q01)

Catalog # H00004435-Q01

Size 25 ug, 10 ug

## Applications



## Specification

<b>Product Description</b>	Human CITED1 partial ORF ( NP_004134, 94 a.a. - 193 a.a.) recombinant protein with GST-tag at N-terminal.
<b>Sequence</b>	SMQLQKLNSQYQGMAAATPGQPGEAGPLQNWDFGAQAGGAESLSPSAGAQSPAIDSDPVDEE VLMSLVVELGLDRANELPELWLGQNEFDFTADFPSSC
<b>Host</b>	Wheat Germ (in vitro)
<b>Theoretical MW (kDa)</b>	36.74
<b>Interspecies Antigen Sequence</b>	Mouse (72); Rat (77)
<b>Preparation Method</b>	<a href="#">in vitro wheat germ expression system</a>
<b>Purification</b>	Glutathione Sepharose 4 Fast Flow
<b>Quality Control Testing</b>	12.5% SDS-PAGE Stained with Coomassie Blue.
<b>Storage Buffer</b>	50 mM Tris-HCl, 10 mM reduced Glutathione, pH=8.0 in the elution buffer.
<b>Storage Instruction</b>	Store at -80°C. Aliquot to avoid repeated freezing and thawing.
<b>Note</b>	Best use within three months from the date of receipt of this protein.

## Applications

- Enzyme-linked Immunoabsorbent Assay
- Western Blot (Recombinant protein)
- Antibody Production
- Protein Array

## Gene Info — CITED1

Entrez GeneID	<a href="#">4435</a>
GeneBank Accession#	<a href="#">NM_004143</a>
Protein Accession#	<a href="#">NP_004134</a>
Gene Name	CITED1
Gene Alias	MSG1
Gene Description	Cbp/p300-interacting transactivator, with Glu/Asp-rich carboxy-terminal domain, 1
Omim ID	<a href="#">300149</a>
Gene Ontology	<a href="#">Hyperlink</a>
Gene Summary	This gene encodes a member of the CREB-binding protein/p300-interacting transactivator with Asp/Glu-rich C-terminal domain (CITED) family of proteins. The encoded protein, also known as melanocyte-specific gene 1, may function as a transcriptional coactivator and may play a role in pigmentation of melanocytes. Alternatively spliced transcript variants have been described. [provided by RefSeq]
Other Designations	Cbp/p300-interacting transactivator 1 OTTHUMP00000023529 OTTHUMP00000023530