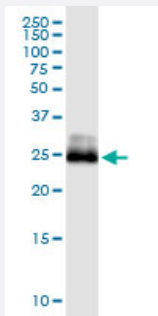


CITED1 (Human) IP-WB Antibody Pair

Catalog # H00004435-PW1

Size 1 Set

Applications



Immunoprecipitation of CITED1 transfected lysate using rabbit polyclonal anti-CITED1 and Protein A Magnetic Bead ([U0007](#)), and immunoblotted with mouse monoclonal anti-CITED1.

Specification

Product Description	This IP-WB antibody pair set comes with one antibody for immunoprecipitation and another to detect the precipitated protein in western blot.
Reactivity	Human
Interspecies Antigen Sequence	Mouse (75%); Rat (77%)
Quality Control Testing	Immunoprecipitation-Western Blot (IP-WB) Immunoprecipitation of CITED1 transfected lysate using rabbit polyclonal anti-CITED1 and Protein A Magnetic Bead (U0007), and immunoblotted with mouse monoclonal anti-CITED1.
Supplied Product	Antibody pair set content: 1. Antibody pair for IP: rabbit polyclonal anti-CITED1 (300 ul) 2. Antibody pair for WB: mouse monoclonal anti-CITED1 (50 ug)
Storage Instruction	Store reagents of the antibody pair set at -20°C or lower. Please aliquot to avoid repeated freeze thaw cycle. Reagents should be returned to -20°C storage immediately after use.

Applications

- Immunoprecipitation-Western Blot

[Protocol Download](#)

Gene Info — CITED1

Entrez GeneID	4435
Gene Name	CITED1
Gene Alias	MSG1
Gene Description	Cbp/p300-interacting transactivator, with Glu/Asp-rich carboxy-terminal domain, 1
Omim ID	300149
Gene Ontology	Hyperlink
Gene Summary	This gene encodes a member of the CREB-binding protein/p300-interacting transactivator with Asp/Glu-rich C-terminal domain (CITED) family of proteins. The encoded protein, also known as melanocyte-specific gene 1, may function as a transcriptional coactivator and may play a role in pigmentation of melanocytes. Alternatively spliced transcript variants have been described. [provided by RefSeq]
Other Designations	Cbp/p300-interacting transactivator 1 OTTHUMP00000023529 OTTHUMP00000023530