

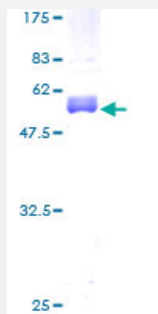
Full-Length

CITED1 (Human) Recombinant Protein (P01)

Catalog # H00004435-P01

Size 25 ug, 10 ug

Applications



Specification

Product Description	Human CITED1 full-length ORF (AAH04240, 1 a.a. - 193 a.a.) recombinant protein with GST-tag at N-terminal.
Sequence	MPTTSRPALDVKGGTSPAKEYANQEMSSVAYSNLAVKDRKAVAILHYPGVASNGTKASGAPTSS SGSPIGSPTTTTPTKPPSFNLHPAPHLLASMLQLKLSQYQGMAAATPGQPGEAGPLQNWDFGA QAGGAESLSPSAGAQSPAIIIDSDPVDEEVLMSLVVELGLDRANELPELWLGQNEFDFTADFPSS C
Host	Wheat Germ (in vitro)
Theoretical MW (kDa)	46.97
Interspecies Antigen Sequence	Mouse (73); Rat (75)
Preparation Method	in vitro wheat germ expression system
Purification	Glutathione Sepharose 4 Fast Flow
Quality Control Testing	12.5% SDS-PAGE Stained with Coomassie Blue.
Storage Buffer	50 mM Tris-HCl, 10 mM reduced Glutathione, pH=8.0 in the elution buffer.
Storage Instruction	Store at -80°C. Aliquot to avoid repeated freezing and thawing.

Note

Best use within three months from the date of receipt of this protein.

Applications

- Enzyme-linked Immunoabsorbent Assay
- Western Blot (Recombinant protein)
- Antibody Production
- Protein Array

Gene Info — CITED1

Entrez GeneID	4435
GeneBank Accession#	BC004240
Protein Accession#	AAH04240
Gene Name	CITED1
Gene Alias	MSG1
Gene Description	Cbp/p300-interacting transactivator, with Glu/Asp-rich carboxy-terminal domain, 1
Omim ID	300149
Gene Ontology	Hyperlink
Gene Summary	This gene encodes a member of the CREB-binding protein/p300-interacting transactivator with Asp/Glu-rich C-terminal domain (CITED) family of proteins. The encoded protein, also known as melanocyte-specific gene 1, may function as a transcriptional coactivator and may play a role in pigmentation of melanocytes. Alternatively spliced transcript variants have been described. [provided by RefSeq]
Other Designations	Cbp/p300-interacting transactivator 1 OTTHUMP00000023529 OTTHUMP00000023530