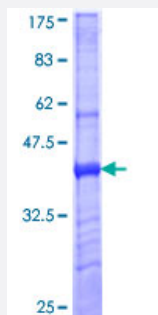


MRC1 (Human) Recombinant Protein (Q01)

Catalog # H00004360-Q01

Size 25 ug, 10 ug

Applications



Specification

Product Description	Human MRC1 partial ORF (NP_002429, 22 a.a. - 130 a.a.) recombinant protein with GST-tag at N-terminal.
Sequence	TRQFLIYNEDHKRCVDAVSPSAVQTAACNQDAESQKFRWVSESQIMSVAFKLCLGVPSKTDWV AITLYACDSKSEFQKWECKNDTLLGIKGEDLFFNYGNRQEKNIMLY
Host	Wheat Germ (in vitro)
Theoretical MW (kDa)	37.73
Interspecies Antigen Sequence	Mouse (84); Rat (85)
Preparation Method	in vitro wheat germ expression system
Purification	Glutathione Sepharose 4 Fast Flow
Quality Control Testing	12.5% SDS-PAGE Stained with Coomassie Blue.
Storage Buffer	50 mM Tris-HCl, 10 mM reduced Glutathione, pH=8.0 in the elution buffer.
Storage Instruction	Store at -80°C. Aliquot to avoid repeated freezing and thawing.
Note	Best use within three months from the date of receipt of this protein.

Applications

- Enzyme-linked Immunoabsorbent Assay
- Western Blot (Recombinant protein)
- Antibody Production
- Protein Array

Gene Info — MRC1

Entrez GeneID [4360](#)

GeneBank Accession# [NM_002438](#)

Protein Accession# [NP_002429](#)

Gene Name MRC1

Gene Alias CD206, CLEC13D, MMR

Gene Description mannose receptor, C type 1

Omim ID [153618](#)

Gene Ontology [Hyperlink](#)

Gene Summary

The recognition of complex carbohydrate structures on glycoproteins is an important part of several biological processes, including cell-cell recognition, serum glycoprotein turnover, and neutralization of pathogens. The protein encoded by this gene is a type I membrane receptor that mediates the endocytosis of glycoproteins by macrophages. The protein has been shown to bind high-mannose structures on the surface of potentially pathogenic viruses, bacteria, and fungi so that they can be neutralized by phagocytic engulfment. This gene is in close proximity to MRC1L1. The gene loci including this gene, MRC1L1, as well as LOC340843 and LOC340893, consist of two nearly identical, tandemly linked genomic regions, which are thought to be a part of a duplicated region. [provided by RefSeq]

Other Designations OTTHUMP00000019245|OTTHUMP00000045206|macrophage mannose receptor|mannose receptor C type 1

Disease

- [Alzheimer Disease](#)
- [Asthma](#)
- [Colorectal Neoplasms](#)
- [Genetic Predisposition to Disease](#)
- [Leprosy](#)
- [Sarcoidosis](#)