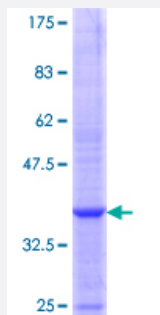


MNDA (Human) Recombinant Protein (Q01)

Catalog # H00004332-Q01

Size 25 ug, 10 ug

Applications



Specification

Product Description	Human MNDA partial ORF (NP_002423.1, 311 a.a. - 407 a.a.) recombinant protein with GST-tag at N-terminal.
Sequence	QLYKQASGTMVYGLFMLQKKS VHKKNTYEQDNTGSMDVVSGKWHNIKCEKGDKLRLFLCLQLR TVDRKLLKLVCGSHSFIKVIKAKKNKEGPMNVN
Host	Wheat Germ (in vitro)
Theoretical MW (kDa)	36.41
Preparation Method	in vitro wheat germ expression system
Purification	Glutathione Sepharose 4 Fast Flow
Quality Control Testing	12.5% SDS-PAGE Stained with Coomassie Blue.
Storage Buffer	50 mM Tris-HCl, 10 mM reduced Glutathione, pH=8.0 in the elution buffer.
Storage Instruction	Store at -80°C. Aliquot to avoid repeated freezing and thawing.
Note	Best use within three months from the date of receipt of this protein.

Applications

- Enzyme-linked Immunoabsorbent Assay
- Western Blot (Recombinant protein)
- Antibody Production
- Protein Array

Gene Info — MNDA

Entrez GeneID [4332](#)

GeneBank Accession# [NM_002432](#)

Protein Accession# [NP_002423.1](#)

Gene Name MNDA

Gene Alias PYHIN3

Gene Description myeloid cell nuclear differentiation antigen

Omim ID [159553](#)

Gene Ontology [Hyperlink](#)

Gene Summary

The myeloid cell nuclear differentiation antigen (MNDA) is detected only in nuclei of cells of the granulocyte-monocyte lineage. A 200-amino acid region of human MNDA is strikingly similar to a region in the proteins encoded by a family of interferon-inducible mouse genes, designated Ifi-201, Ifi-202, and Ifi-203, that are not regulated in a cell- or tissue-specific fashion. The 1.8-kb MNDA mRNA, which contains an interferon-stimulated response element in the 5-prime untranslated region, was significantly upregulated in human monocytes exposed to interferon alpha. MNDA is located within 2,200 kb of FCER1A, APCS, CRP, and SPTA1. In its pattern of expression and/or regulation, MNDA resembles IFI16, suggesting that these genes participate in blood cell-specific responses to interferons. [provided by RefSeq]

Other Designations OTTHUMP00000024384

Disease

- [Genetic Predisposition to Disease](#)
- [Lupus Erythematosus](#)