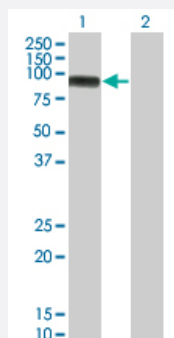


MAP3K11 monoclonal antibody (M02), clone 3D11

Catalog # H00004296-M02

Size 100 ug

Applications

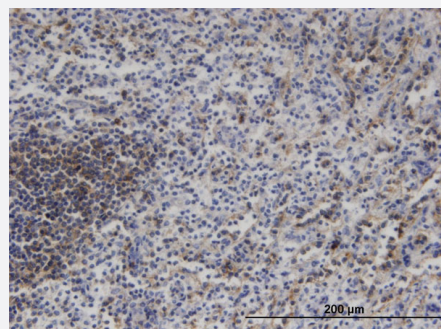


Western Blot (Transfected lysate)

Western Blot analysis of MAP3K11 expression in transfected 293T cell line by MAP3K11 monoclonal antibody (M02), clone 3D11.

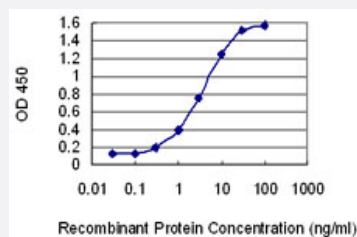
Lane 1: MAP3K11 transfected lysate (92.7 kDa).

Lane 2: Non-transfected lysate.



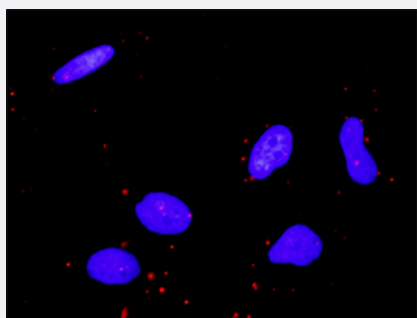
Immunohistochemistry (Formalin/PFA-fixed paraffin-embedded sections)

Immunoperoxidase of monoclonal antibody to MAP3K11 on formalin-fixed paraffin-embedded human spleen. [antibody concentration 3 ug/ml]



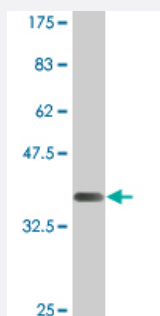
Sandwich ELISA (Recombinant protein)

Detection limit for recombinant GST tagged MAP3K11 is 0.1 ng/ml as a capture antibody.



In situ Proximity Ligation Assay (Cell)

Proximity Ligation Analysis of protein-protein interactions between CDC42 and MAP3K11. HeLa cells were stained with anti-CDC42 rabbit purified polyclonal 1:1200 and anti-MAP3K11 mouse monoclonal antibody 1:50. Each red dot represents the detection of protein-protein interaction complex, and nuclei were counterstained with DAPI (blue).



Western Blot detection against Immunogen (37.51 KDa) .

Specification

| | |
|--------------------------------------|--|
| Product Description | Mouse monoclonal antibody raised against a partial recombinant MAP3K11. |
| Immunogen | MAP3K11 (NP_002410, 741 a.a. ~ 847 a.a) partial recombinant protein with GST tag. MW of the GST tag alone is 26 KDa. |
| Sequence | PPPGTSRSAPGTPGTPRSPPLGLISRPRPSPLRSRIDPWSFVSAGPRPSPLPSPQPAPRRAPWT LFPDSDPFWDSPANPFQGGPQDCRAQTKDMGAQAPWVPEAGP |
| Host | Mouse |
| Reactivity | Human |
| Interspecies Antigen Sequence | Mouse (95); Rat (93) |
| Isotype | IgG2a Kappa |
| Quality Control Testing | Antibody Reactive Against Recombinant Protein. Western Blot detection against Immunogen (37.51 KDa) . |
| Storage Buffer | In 1x PBS, pH 7.4 |
| Storage Instruction | Store at -20°C or lower. Aliquot to avoid repeated freezing and thawing. |

Applications

- Western Blot (Transfected lysate)

Western Blot analysis of MAP3K11 expression in transfected 293T cell line by MAP3K11 monoclonal antibody (M02), clone 3D11.

Lane 1: MAP3K11 transfected lysate(92.7 KDa).

Lane 2: Non-transfected lysate.

[Protocol Download](#)

- Western Blot (Recombinant protein)

[Protocol Download](#)

- Immunohistochemistry (Formalin/PFA-fixed paraffin-embedded sections)

Immunoperoxidase of monoclonal antibody to MAP3K11 on formalin-fixed paraffin-embedded human spleen. [antibody concentration 3 ug/ml]

[Protocol Download](#)

- Sandwich ELISA (Recombinant protein)

Detection limit for recombinant GST tagged MAP3K11 is 0.1 ng/ml as a capture antibody.

[Protocol Download](#)

- ELISA

- In situ* Proximity Ligation Assay (Cell)

Proximity Ligation Analysis of protein-protein interactions between CDC42 and MAP3K11. HeLa cells were stained with anti-CDC42 rabbit purified polyclonal 1:1200 and anti-MAP3K11 mouse monoclonal antibody 1:50. Each red dot represents the detection of protein-protein interaction complex, and nuclei were counterstained with DAPI (blue).

Gene Info — MAP3K11

Entrez GeneID [4296](#)

GeneBank Accession# [NM_002419](#)

Protein Accession# [NP_002410](#)

Gene Name MAP3K11

| | |
|--------------------|---|
| Gene Alias | MGC17114, MLK-3, MLK3, PTK1, SPRK |
| Gene Description | mitogen-activated protein kinase kinase kinase 11 |
| Omim ID | 600050 |
| Gene Ontology | Hyperlink |
| Gene Summary | <p>The protein encoded by this gene is a member of the serine/threonine kinase family. This kinase contains a SH3 domain and a leucine zipper-basic motif. This kinase preferentially activates MAP K8/JNK kinase, and functions as a positive regulator of JNK signaling pathway. This kinase can directly phosphorylate, and activates I kappa B kinase alpha and beta, and is found to be involved in the transcription activity of NF-kappaB mediated by Rho family GTPases and CDC42. [provided by RefSeq]</p> |
| Other Designations | SH3 domain-containing proline-rich kinase mixed lineage kinase 3 protein-tyrosine kinase PTK1 |

Pathway

- [MAPK signaling pathway](#)