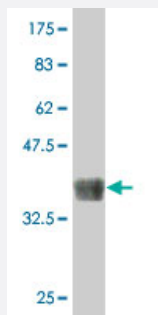


# MAP3K11 polyclonal antibody (A01)

Catalog # H00004296-A01

Size 50 uL

## Applications



Western Blot detection against Immunogen (37.88 KDa) .

## Specification

<b>Product Description</b>	Mouse polyclonal antibody raised against a partial recombinant MAP3K11.
<b>Immunogen</b>	MAP3K11 (NP_002410, 741 a.a. ~ 847 a.a) partial recombinant protein with GST tag.
<b>Sequence</b>	PPPGTSRSAPGTPGTTPRSPPLGLISRPRPSPLRSRIDPWSFVSAGPRPSPLPSPQPAPRRAPWT LFPDSDPFWDSPPANPFQGGPQDCRAQTKDMGAQAPWVPEAGP
<b>Host</b>	Mouse
<b>Reactivity</b>	Human
<b>Interspecies Antigen Sequence</b>	Mouse (95); Rat (93)
<b>Quality Control Testing</b>	Antibody Reactive Against Recombinant Protein. Western Blot detection against Immunogen (37.88 KDa) .
<b>Storage Buffer</b>	50 % glycerol
<b>Storage Instruction</b>	Store at -20°C or lower. Aliquot to avoid repeated freezing and thawing.

## Applications

- Western Blot (Recombinant protein)

[Protocol Download](#)

- ELISA

## Gene Info — MAP3K11

Entrez GeneID [4296](#)

GeneBank Accession# [NM\\_002419](#)

Protein Accession# [NP\\_002410](#)

Gene Name MAP3K11

Gene Alias MGC17114, MLK-3, MLK3, PTK1, SPRK

Gene Description mitogen-activated protein kinase kinase kinase 11

Omim ID [600050](#)

Gene Ontology [Hyperlink](#)

**Gene Summary** The protein encoded by this gene is a member of the serine/threonine kinase family. This kinase contains a SH3 domain and a leucine zipper-basic motif. This kinase preferentially activates MAP K8/JNK kinase, and functions as a positive regulator of JNK signaling pathway. This kinase can directly phosphorylate, and activates I $\kappa$ B kinase alpha and beta, and is found to be involved in the transcription activity of NF-kappaB mediated by Rho family GTPases and CDC42. [provided by RefSeq]

**Other Designations** SH3 domain-containing proline-rich kinase|mixed lineage kinase 3|protein-tyrosine kinase PTK1

## Pathway

- [MAPK signaling pathway](#)