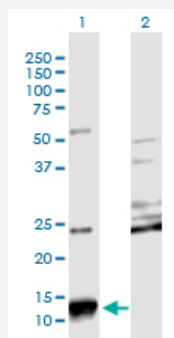


# SCGB2A2 monoclonal antibody (M08), clone 3A4

Catalog # H00004250-M08

Size 100 ug

## Applications

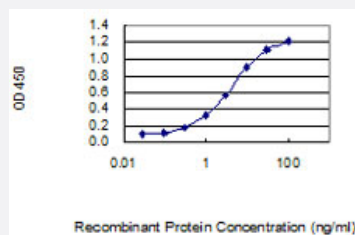


### Western Blot (Transfected lysate)

Western Blot analysis of SCGB2A2 expression in transfected 293T cell line by SCGB2A2 monoclonal antibody (M08), clone 3A4.

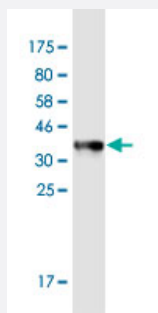
Lane 1: SCGB2A2 transfected lysate (Predicted MW: 10.5 KDa).

Lane 2: Non-transfected lysate.



### Sandwich ELISA (Recombinant protein)

Detection limit for recombinant GST tagged SCGB2A2 is 0.1 ng/ml as a capture antibody.



Western Blot detection against Immunogen (35.86 KDa) .

## Specification

### Product Description

Mouse monoclonal antibody raised against a full-length recombinant SCGB2A2.

<b>Immunogen</b>	SCGB2A2 (NP_002402.1, 1 a.a. ~ 93 a.a) full-length recombinant protein with GST tag. MW of the GST tag alone is 26 KDa.
<b>Sequence</b>	MKLLMVLMLAALSQHCYAGSGCPLLENVISKTINPQVSKTEYKELLQEFIDDNATTNAIDELKECFL NQTDETLNVEVFMQLYDSSLCDLF
<b>Host</b>	Mouse
<b>Reactivity</b>	Human
<b>Isotype</b>	IgG2a Kappa
<b>Quality Control Testing</b>	Antibody Reactive Against Recombinant Protein. Western Blot detection against Immunogen (35.86 KDa) .
<b>Storage Buffer</b>	In 1x PBS, pH 7.4
<b>Storage Instruction</b>	Store at -20°C or lower. Aliquot to avoid repeated freezing and thawing.

## Applications

- Western Blot (Transfected lysate)

Western Blot analysis of SCGB2A2 expression in transfected 293T cell line by SCGB2A2 monoclonal antibody (M08), clone 3A4.

Lane 1: SCGB2A2 transfected lysate (Predicted MW: 10.5 KDa).

Lane 2: Non-transfected lysate.

[Protocol Download](#)

- Western Blot (Recombinant protein)

[Protocol Download](#)

- Sandwich ELISA (Recombinant protein)

Detection limit for recombinant GST tagged SCGB2A2 is 0.1 ng/ml as a capture antibody.

[Protocol Download](#)

- ELISA

## Gene Info — SCGB2A2

Entrez GeneID [4250](#)

GeneBank Accession#	<a href="#">NM_002411.1</a>
Protein Accession#	<a href="#">NP_002402.1</a>
Gene Name	SCGB2A2
Gene Alias	MGB1, MGC71974, UGB2
Gene Description	secretoglobin, family 2A, member 2
Omim ID	<a href="#">605562</a>
Gene Ontology	<a href="#">Hyperlink</a>
Gene Summary	family 2A
Other Designations	mammaglobin 1 mammaglobin A