

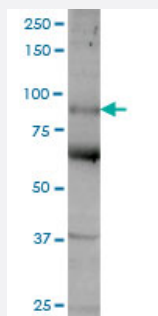
MaxPab®

MF12 purified MaxPab mouse polyclonal antibody (B01P)

Catalog # H00004241-B01P

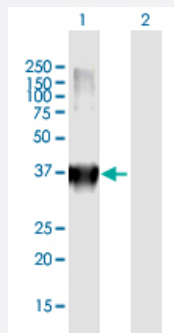
Size 50 ug

Applications



Western Blot (Tissue lysate)

MF12 MaxPab polyclonal antibody. Western Blot analysis of MF12 expression in human pancreas.



Western Blot (Transfected lysate)

Western Blot analysis of MF12 expression in transfected 293T cell line ([H00004241-T01](#)) by MF12 MaxPab polyclonal antibody.

Lane 1: MF12 transfected lysate(33.22 KDa).

Lane 2: Non-transfected lysate.

Specification

Product Description

Mouse polyclonal antibody raised against a full-length human MF12 protein.

Immunogen

MF12 (NP_201573.1, 1 a.a. ~ 302 a.a) full-length human protein.

Sequence

MRGPSGALWLLLALRTVLGGMEVRWCATSDPEQHKCGNMSEAFREAGIQPSLLCVRGTSADHC
VQLIAAQEADAITLDGGAMEAGKEHGLKPVVGEVYDQEVGTSYYAVAVVRRSSHVTIDTLKGVKS
CHTGINRTVGWNVPVGYLVESGRLSVMGCDVLKAVSDYFGGSCVPGAGETSYSESLCRLCRGD
SSGEGVCDKSPLERYDYSGAFRCLAEGAGDVAFVKHSTVLENTDESPSRRQWTWRSEEEEEGE
CPAHEEARRTMRSSAGQAWKWAPVHRPQDESDKGFEFGKRAKSRDMLG

Host

Mouse

| | |
|-------------------------|--|
| Reactivity | Human |
| Quality Control Testing | Antibody reactive against mammalian transfected lysate. |
| Storage Buffer | In 1x PBS, pH 7.4 |
| Storage Instruction | Store at -20°C or lower. Aliquot to avoid repeated freezing and thawing. |

Applications

- Western Blot (Tissue lysate)

MF12 MaxPab polyclonal antibody. Western Blot analysis of MF12 expression in human pancreas.

[Protocol Download](#)

- Western Blot (Transfected lysate)

Western Blot analysis of MF12 expression in transfected 293T cell line ([H00004241-T01](#)) by MF12 MaxPab polyclonal antibody.

Lane 1: MF12 transfected lysate(33.22 KDa).

Lane 2: Non-transfected lysate.

[Protocol Download](#)

Gene Info — MF12

| | |
|---------------------|---|
| Entrez GeneID | 4241 |
| GeneBank Accession# | NM_033316.2 |
| Protein Accession# | NP_201573.1 |
| Gene Name | MF12 |
| Gene Alias | CD228, FLJ38863, MAP97, MGC4856, MTF1 |
| Gene Description | antigen p97 (melanoma associated) identified by monoclonal antibodies 133.2 and 96.5 |
| Omim ID | 155750 |
| Gene Ontology | Hyperlink |
| Gene Summary | The protein encoded by this gene is a cell-surface glycoprotein found on melanoma cells. The protein shares sequence similarity and iron-binding properties with members of the transferrin superfamily. The importance of the iron binding function has not yet been identified. This gene resides in the same region of chromosome 3 as members of the transferrin superfamily. Alternative splicing results in two transcript variants. [provided by RefSeq] |

Other Designations

melanoma-associated antigen p97|melanoma-associated antigen p97, isoform 2|melanotransferrin
