

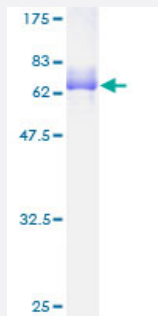
Full-Length

MEOX2 (Human) Recombinant Protein (P01)

Catalog # H00004223-P01

Size 10 ug, 25 ug

Applications



Specification

Product Description

Human MEOX2 full-length ORF (AAH17021, 1 a.a. - 303 a.a.) recombinant protein with GST-tag at N-terminal.

Sequence

MEHPLFGCLRSPHATAQGLHPFSQSSLALHGRSDHMSYPELSTSSSSCIAGYPNEEGMFASQH
HRGHHHHHHHHHHHHQQQHQALQTNWHLPMQSSPPSAARHSLCLQPDSSGGPPELGSSPPVL
CSNSSLGSSTPTGAACAPGDYGRQALSPAFAEKRSRGGKRSKSDSSDSQEGNYKSEVNSKPRK
ERTAFTEQIRELEAEFAHHNYLTRRREYIAVNLDLTERQVKVWFQNRMRMKWKRVKGGQQGAA
AREKELVNVKKGTLTPSELGIGAATLQQTGDSIANEDSHSDHSSEHAHL

Host

Wheat Germ (in vitro)

Theoretical MW (kDa)

59.07

Interspecies Antigen Sequence

Mouse (98)

Preparation Method

[in vitro wheat germ expression system](#)

Purification

Glutathione Sepharose 4 Fast Flow

Quality Control Testing

12.5% SDS-PAGE Stained with Coomassie Blue.

Storage Buffer

50 mM Tris-HCl, 10 mM reduced Glutathione, pH=8.0 in the elution buffer.

Storage Instruction

Store at -80°C. Aliquot to avoid repeated freezing and thawing.

Note

Best use within three months from the date of receipt of this protein.

Applications

- Enzyme-linked Immunoabsorbent Assay
- Western Blot (Recombinant protein)
- Antibody Production
- Protein Array

Gene Info — MEOX2

Entrez GeneID[4223](#)**GeneBank Accession#**[BC017021](#)**Protein Accession#**[AAH17021](#)**Gene Name**

MEOX2

Gene Alias

GAX, MOX2

Gene Description

mesenchyme homeobox 2

Omim ID[600535](#)**Gene Ontology**[Hyperlink](#)**Gene Summary**

This gene encodes a member of a subfamily of non-clustered, diverged, antennapedia-like homeobox-containing genes. The encoded protein may play a role in the regulation of vertebrate limb myogenesis. Mutations in the related mouse protein may be associated with craniofacial and/or skeletal abnormalities, in addition to neurovascular dysfunction observed in Alzheimer's disease. [provided by RefSeq]

Other Designations

growth arrest-specific homeo box|mesenchyme homeo box 2 (growth arrest-specific homeo box)

Disease

- [Tobacco Use Disorder](#)