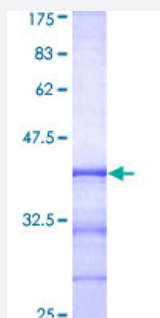


RAB8A (Human) Recombinant Protein (Q01)

Catalog # H00004218-Q01

Size 25 ug, 10 ug

Applications



Specification

Product Description	Human RAB8A partial ORF (AAH02977, 108 a.a. - 207 a.a.) recombinant protein with GST-tag at N-terminal.
Sequence	EHASADVEKMILGNKCDVNDKRQVSKERGEKLALDYGIKFMETSAKANINVENAFFTLARDIKAKMDKKLEGNSPQGSNQGKVPDQQKRSSFFRCVLL
Host	Wheat Germ (in vitro)
Theoretical MW (kDa)	36.63
Interspecies Antigen Sequence	Mouse (94); Rat (94)
Preparation Method	in vitro wheat germ expression system
Purification	Glutathione Sepharose 4 Fast Flow
Quality Control Testing	12.5% SDS-PAGE Stained with Coomassie Blue.
Storage Buffer	50 mM Tris-HCl, 10 mM reduced Glutathione, pH=8.0 in the elution buffer.
Storage Instruction	Store at -80°C. Aliquot to avoid repeated freezing and thawing.
Note	Best use within three months from the date of receipt of this protein.

Applications

- Enzyme-linked Immunoabsorbent Assay
- Western Blot (Recombinant protein)
- Antibody Production
- Protein Array

Gene Info — RAB8A

Entrez GeneID [4218](#)

GeneBank Accession# [BC002977](#)

Protein Accession# [AAH02977](#)

Gene Name RAB8A

Gene Alias MEL, RAB8

Gene Description RAB8A, member RAS oncogene family

Omim ID [165040](#)

Gene Ontology [Hyperlink](#)

Gene Summary

The protein encoded by this gene is a member of the RAS superfamily which are small GTP/GDP-binding proteins with an average size of 200 amino acids. The RAS-related proteins of the RAB/YPT family may play a role in the transport of proteins from the endoplasmic reticulum to the Golgi and the plasma membrane. This protein shares 97%, 96%, and 51% similarity with the dog RAB8, mouse MEL, and mouse YPT1 proteins, respectively and contains the 4 GTP/GDP-binding sites that are present in all the RAS proteins. The putative effector-binding site of this protein is similar to that of the RAB/YPT proteins. However, this protein contains a C-terminal CAAX motif that is characteristic of many RAS superfamily members but which is not found in YPT1 and the majority of RAB proteins. Although this gene was isolated as a transforming gene from a melanoma cell line, no linkage between MEL and malignant melanoma has been demonstrable. This oncogene is located 800 kb distal to MY09B on chromosome 19p13.1. [provided by RefSeq]

Other Designations

mel transforming oncogene|mel transforming oncogene (RAB8 homolog)|mel transforming oncogene (derived from cell line NK14)|mel transforming oncogene (derived from cell line NK14)- RAB8 homolog|ras-associated protein RAB8