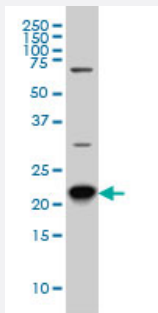


RAB8A monoclonal antibody (M02), clone 3G1

Catalog # H00004218-M02

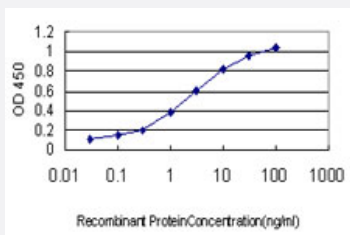
Size 100 ug

Applications



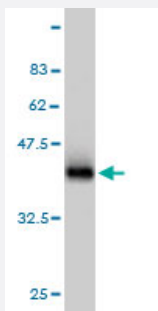
Western Blot (Cell lysate)

RAB8A monoclonal antibody (M02), clone 3G1 Western Blot analysis of RAB8A expression in HeLa S3 NE (Cat # L013V3).



Sandwich ELISA (Recombinant protein)

Detection limit for recombinant GST tagged RAB8A is approximately 0.1ng/ml as a capture antibody.



Western Blot detection against Immunogen (36.63 KDa) .

Specification

Product Description

Mouse monoclonal antibody raised against a partial recombinant RAB8A.

Immunogen	RAB8A (AAH02977, 108 a.a. ~ 207 a.a) partial recombinant protein with GST tag. MW of the GST tag alone is 26 KDa.
Sequence	EHASADVEKMILGNKCDVNDKRQVSKERGEKLALDYGIKFMETSAKANINVENAFFTLARDIKAKMDKKLEGNSPQGSNQG VKITPDQQKRSSFFRCVLL
Host	Mouse
Reactivity	Human
Interspecies Antigen Sequence	Mouse (94); Rat (94)
Isotype	IgG1 Kappa
Quality Control Testing	Antibody Reactive Against Recombinant Protein. Western Blot detection against Immunogen (36.63 KDa) .
Storage Buffer	In 1x PBS, pH 7.4
Storage Instruction	Store at -20°C or lower. Aliquot to avoid repeated freezing and thawing.

Applications

- Western Blot (Cell lysate)

RAB8A monoclonal antibody (M02), clone 3G1 Western Blot analysis of RAB8A expression in Hela S3 NE (Cat # L013V3).

[Protocol Download](#)

- Western Blot (Recombinant protein)

[Protocol Download](#)

- Sandwich ELISA (Recombinant protein)

Detection limit for recombinant GST tagged RAB8A is approximately 0.1ng/ml as a capture antibody.

[Protocol Download](#)

- ELISA

Gene Info — RAB8A

Entrez GeneID [4218](#)

GeneBank Accession#	BC002977
Protein Accession#	AAH02977
Gene Name	RAB8A
Gene Alias	MEL, RAB8
Gene Description	RAB8A, member RAS oncogene family
Omim ID	165040
Gene Ontology	Hyperlink
Gene Summary	<p>The protein encoded by this gene is a member of the RAS superfamily which are small GTP/GDP-binding proteins with an average size of 200 amino acids. The RAS-related proteins of the RAB/YPT family may play a role in the transport of proteins from the endoplasmic reticulum to the Golgi and the plasma membrane. This protein shares 97%, 96%, and 51% similarity with the dog RAB8, mouse MEL, and mouse YPT1 proteins, respectively and contains the 4 GTP/GDP-binding sites that are present in all the RAS proteins. The putative effector-binding site of this protein is similar to that of the RAB/YPT proteins. However, this protein contains a C-terminal CAAX motif that is characteristic of many RAS superfamily members but which is not found in YPT1 and the majority of RAB proteins. Although this gene was isolated as a transforming gene from a melanoma cell line, no linkage between MEL and malignant melanoma has been demonstrable. This oncogene is located 800 kb distal to MY09B on chromosome 19p13.1. [provided by RefSeq]</p>
Other Designations	mel transforming oncogene mel transforming oncogene (RAB8 homolog) mel transforming oncogene (derived from cell line NK14) mel transforming oncogene (derived from cell line NK14)- RAB8 homolog ras-associated protein RAB8

Publication Reference

- [Synaptic-like Vesicles Facilitate Pioneer Axon Invasion.](#)

Nichols EL, Smith CJ.

Current Biology : CB 2019 Aug; 29(16):2652.

Application: IF, Mouse, dorsal root ganglia

- [Basal exon skipping and nonsense-associated altered splicing allows bypassing complete CEP290 loss-of-function in individuals with unusually mild retinal disease.](#)

Barry I, Perrault I, Michel C, Soussan M, Goudin N, Rio M, Thomas S, Attié-Bitach T, Hamel C, Dollfus H, Kaplan J, Rozet JM, Gerard X.

Human Molecular Genetics 2018 May; [Epub].

Application: ICC, Human, Fibroblasts

- [Critical role of Rab11a-mediated recycling endosomes in the assembly of type I parainfluenza viruses.](#)

Stone R, Hayashi T, Bajimaya S, Hodges E, Takimoto T.

Virology 2016 Jan; 487:11.

Application: WB-Ce, Human, HeLa cells