

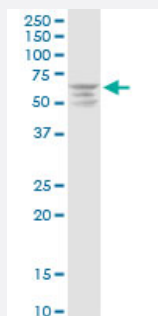
MaxPab®

# MAP3K3 purified MaxPab rabbit polyclonal antibody (D03P)

Catalog # H00004215-D03P

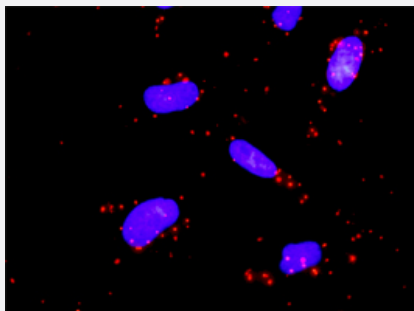
Size 100 ug

## Applications



### Western Blot (Cell lysate)

MAP3K3 MaxPab rabbit polyclonal antibody. Western Blot analysis of MAP3K3 expression in HeLa.



### In situ Proximity Ligation Assay (Cell)

Proximity Ligation Analysis of protein-protein interactions between MAP3K3 and MAP2K5. HeLa cells were stained with anti-MAP3K3 rabbit purified polyclonal 1:1200 and anti-MAP2K5 mouse monoclonal antibody 1:50. Each red dot represents the detection of protein-protein interaction complex, and nuclei were counterstained with DAPI (blue).

## Specification

Product Description	Rabbit polyclonal antibody raised against a full-length human MAP3K3 protein.
Immunogen	MAP3K3 (AAH10464.1, 1 a.a. ~ 90 a.a) full-length human protein.
Sequence	MNEANVMLPYSGKEEPVLPVAMTLPLPGRGPRCGTAATEGGSSFVNAVVSVLQVGVTLMMLYPV SKLETVCALWALSTPALGLGLGCIEKS
Host	Rabbit
Reactivity	Human
Quality Control Testing	Antibody reactive against mammalian transfected lysate.

**Storage Buffer**

In 1x PBS, pH 7.4

**Storage Instruction**

Store at -20°C or lower. Aliquot to avoid repeated freezing and thawing.

## Applications

- Western Blot (Cell lysate)

MAP3K3 MaxPab rabbit polyclonal antibody. Western Blot analysis of MAP3K3 expression in HeLa.

[Protocol Download](#)

- In situ* Proximity Ligation Assay (Cell)

Proximity Ligation Analysis of protein-protein interactions between MAP3K3 and MAP2K5. HeLa cells were stained with anti-MAP3K3 rabbit purified polyclonal 1:1200 and anti-MAP2K5 mouse monoclonal antibody 1:50. Each red dot represents the detection of protein-protein interaction complex, and nuclei were counterstained with DAPI (blue).

## Gene Info — MAP3K3

**Entrez GeneID**[4215](#)**GeneBank Accession#**[BC010464.1](#)**Protein Accession#**[AAH10464.1](#)**Gene Name**

MAP3K3

**Gene Alias**

MAPKKK3, MEKK3

**Gene Description**

mitogen-activated protein kinase kinase kinase 3

**Omim ID**[602539](#)**Gene Ontology**[Hyperlink](#)**Gene Summary**

This gene product is a 626-amino acid polypeptide that is 96.5% identical to mouse Mekk3. Its catalytic domain is closely related to those of several other kinases, including mouse Mekk2, tobacco NPK, and yeast Ste11. Northern blot analysis revealed a 4.6-kb transcript that appears to be ubiquitously expressed. This protein directly regulates the stress-activated protein kinase (SAPK) and extracellular signal-regulated protein kinase (ERK) pathways by activating SEK and MEK1/2 respectively; it does not regulate the p38 pathway. In cotransfection assays, it enhanced transcription from a nuclear factor kappa-B (NFkB)-dependent reporter gene, consistent with a role in the SAPK pathway. Alternatively spliced transcript variants encoding distinct isoforms have been observed. [provided by RefSeq]

**Other Designations**

MAP/ERK kinase kinase 3|MAPK/ERK kinase kinase 3

## Pathway

- [GnRH signaling pathway](#)
- [MAPK signaling pathway](#)
- [Neurotrophin signaling pathway](#)

## Disease

- [Cardiovascular Diseases](#)
- [Diabetes Mellitus](#)
- [Edema](#)