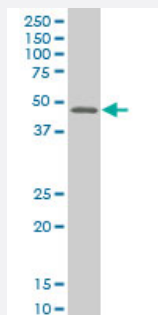


# MEF2B monoclonal antibody (M24A), clone 4B5

Catalog # H00004207-M24A

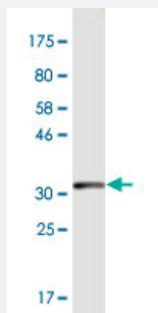
Size 200 uL

## Applications



### Western Blot (Tissue lysate)

MEF2B monoclonal antibody (M24A), clone 4B5. Western Blot analysis of MEF2B expression in human stomach.



Western Blot detection against Immunogen (33.44 KDa) .

## Specification

<b>Product Description</b>	Mouse monoclonal antibody raised against a partial recombinant MEF2B.
<b>Immunogen</b>	MEF2B (NP_005910.1, 165 a.a. ~ 235 a.a) partial recombinant protein with GST tag. MW of the GST tag alone is 26 KDa.
<b>Sequence</b>	SRPSPFRPAAPKAGPPGLVHPLFSPSHLTSKTPPLYLPTEGRRSDLPGLAGPRGGLNTRSLSY SGLQNP
<b>Host</b>	Mouse
<b>Reactivity</b>	Human
<b>Isotype</b>	IgG2a Kappa

**Quality Control Testing**

Antibody Reactive Against Recombinant Protein.  
Western Blot detection against Immunogen (33.44 KDa) .

**Storage Buffer**

In ascites fluid

**Storage Instruction**

Store at -20°C or lower. Aliquot to avoid repeated freezing and thawing.

## Applications

- Western Blot (Tissue lysate)

MEF2B monoclonal antibody (M24A), clone 4B5. Western Blot analysis of MEF2B expression in human stomach.

[Protocol Download](#)

- Western Blot (Recombinant protein)

[Protocol Download](#)

- ELISA

## Gene Info — MEF2B

**Entrez GeneID**

[4207](#)

**GeneBank Accession#**

[NM\\_005919](#)

**Protein Accession#**

[NP\\_005910.1](#)

**Gene Name**

MEF2B

**Gene Alias**

FLJ32599, FLJ46391, MGC189732, MGC189763, RSRFR2

**Gene Description**

myocyte enhancer factor 2B

**Omim ID**

[600661](#)

**Gene Ontology**

[Hyperlink](#)

**Gene Summary**

This gene represents numerous read-through transcripts that span geneID:729991 and 100271849. Many read-through transcripts are predicted to be nonsense-mediated decay (NMD) candidates, and are thought to be non-coding. Some transcripts are predicted to be capable of translation reinitiation at a downstream AUG, resulting in expression of at least one isoform of myocyte enhancer factor 2B (MEF2B) from this read-through locus. At least one additional MEF2B variant and isoform can be expressed from a downstream promoter, and is annotated on geneID:100271849. [provided by RefSeq]

**Other Designations**

MADS box transcription enhancer factor 2, polypeptide B (myocyte enhancer factor 2B)

**Disease**

- [Cardiovascular Diseases](#)
- [Diabetes Mellitus](#)
- [Edema](#)
- [Tobacco Use Disorder](#)