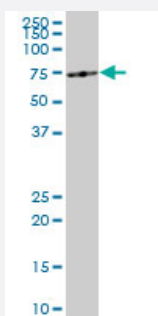


ME1 monoclonal antibody (M03), clone 3H5

Catalog # H00004199-M03

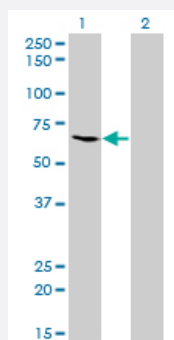
Size 100 ug

Applications



Western Blot (Cell lysate)

ME1 monoclonal antibody (M03), clone 3H5. Western Blot analysis of ME1 expression in HepG2 (Cat # L019V1).

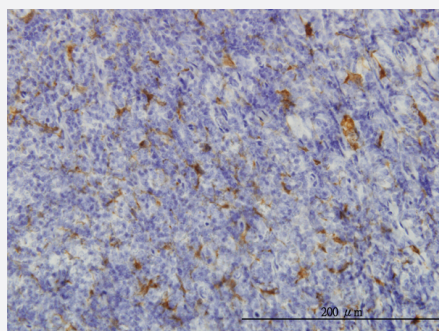


Western Blot (Transfected lysate)

Western Blot analysis of ME1 expression in transfected 293T cell line by ME1 monoclonal antibody (M03), clone 3H5.

Lane 1: ME1 transfected lysate(64.1 KDa).

Lane 2: Non-transfected lysate.

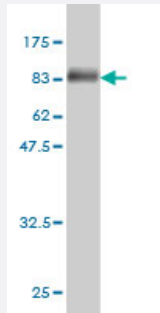
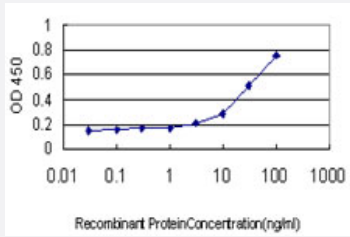


Immunohistochemistry (Formalin/PFA-fixed paraffin-embedded sections)

Immunoperoxidase of monoclonal antibody to ME1 on formalin-fixed paraffin-embedded human tonsil. [antibody concentration 0.5 ug/ml]

Sandwich ELISA (Recombinant protein)

Detection limit for recombinant GST tagged ME1 is approximately 1ng/ml as a capture antibody.



Western Blot detection against Immunogen (88.66 KDa) .

Specification

Product Description	Mouse monoclonal antibody raised against a full length recombinant ME1.
Immunogen	ME1 (AAH25246, 1 a.a. ~ 572 a.a) full-length recombinant protein with GST tag. MW of the GST tag alone is 26 KDa.
Sequence	MEPEAPRRRHTHQRGYLLTRNPHLNKDLAFTLEERQQLNIHGLPPSFNSQEIQVLRVVKNFEHLN SDFDRYLLMLDLQDRNEKLFYRVLTSIEKFMPVYTPTVGLACQQYSLVFRKPRGLFITIHDRGHIA SVLNAWPEDVIKAMVTDGERILGLGDLGCNGMGIPVGKLALYTACGGMNPQECLPVILDVGTENE ELLKDPLYIGLRQRRVRGSEYDDFLDEFMEAVSSKYGMNCLIQFEDFANVNAFRLLNKYRNQYCT FNDDIQGTASVAVAGLLAALRITKNKLSAQITLFGAGEAALGIAHLVMALEKEGLPKEKAIKKIWL VDSKGLIVKGRASLTQEKEKFAHEHEEMKNLEAIVQEIKPTALIGVAAIGGAFSEQILKDMAAFNER PIIFALSNPTSKAECSAEQCYKITKGRAIFASGSPFDPVTLPNGQTLYPGQGNNSYVFPGVAGLVVA CGLRQITDNIFLTAEVIAQQVSDKHLEEGRLYPPLNTIRDVSLKIAEKIVKDAYQEKTATVYPEPQNK EAFVRSQMYSTDYDQILPDCYSWPPEEVQKIQTKVDQ
Host	Mouse
Reactivity	Human
Isotype	IgG1 Kappa
Quality Control Testing	Antibody Reactive Against Recombinant Protein. Western Blot detection against Immunogen (88.66 KDa) .
Storage Buffer	In 1x PBS, pH 7.4

Storage Instruction

Store at -20°C or lower. Aliquot to avoid repeated freezing and thawing.

Applications

- Western Blot (Cell lysate)

ME1 monoclonal antibody (M03), clone 3H5. Western Blot analysis of ME1 expression in HepG2 (Cat # L019V1).

[Protocol Download](#)

- Western Blot (Transfected lysate)

Western Blot analysis of ME1 expression in transfected 293T cell line by ME1 monoclonal antibody (M03), clone 3H5.

Lane 1: ME1 transfected lysate(64.1 KDa).

Lane 2: Non-transfected lysate.

[Protocol Download](#)

- Western Blot (Recombinant protein)

[Protocol Download](#)

- Immunohistochemistry (Formalin/PFA-fixed paraffin-embedded sections)

Immunoperoxidase of monoclonal antibody to ME1 on formalin-fixed paraffin-embedded human tonsil. [antibody concentration 0.5 ug/ml]

[Protocol Download](#)

- Sandwich ELISA (Recombinant protein)

Detection limit for recombinant GST tagged ME1 is approximately 1ng/ml as a capture antibody.

[Protocol Download](#)

- ELISA

Gene Info — ME1

Entrez GeneID [4199](#)

GeneBank Accession# [BC025246](#)

Protein Accession# [AAH25246](#)

Gene Name ME1

Gene Alias	HUMNDME, MES
Gene Description	malic enzyme 1, NADP(+)-dependent, cytosolic
Omim ID	154250
Gene Ontology	Hyperlink
Gene Summary	This gene encodes a cytosolic, NADP-dependent enzyme that generates NADPH for fatty acid biosynthesis. The activity of this enzyme, the reversible oxidative decarboxylation of malate, links the glycolytic and citric acid cycles. The regulation of expression for this gene is complex. Increased expression can result from elevated levels of thyroid hormones or by higher proportions of carbohydrates in the diet. [provided by RefSeq]
Other Designations	Malic enzyme, cytoplasmic NADP-dependent malic enzyme OTTHUMP00000016792 cytosolic malic enzyme 1 malate dehydrogenase malic enzyme 1, soluble pyruvic-malic carboxylase

Publication Reference

- [Role for malic enzyme, pyruvate carboxylation and mitochondrial malate import in the glucose-stimulated insulin secretion.](#)

Heart E, Cline GW, Collis LP, Pongratz RL, Gray J, Smith PJ.

American Journal of Physiology. Endocrinology and Metabolism 2009 Jun; 296(6):E1354.

Application: IF, Mouse, Mouse β -cells

Pathway

- [Biosynthesis of alkaloids derived from histidine and purine](#)
- [Biosynthesis of alkaloids derived from ornithine](#)
- [Biosynthesis of alkaloids derived from shikimate pathway](#)
- [Biosynthesis of alkaloids derived from terpenoid and polyketide](#)
- [Biosynthesis of terpenoids and steroids](#)
- [Carbon fixation in photosynthetic organisms](#)
- [Metabolic pathways](#)
- [PPAR signaling pathway](#)
- [Pyruvate metabolism](#)

Disease

- [Lung Neoplasms](#)