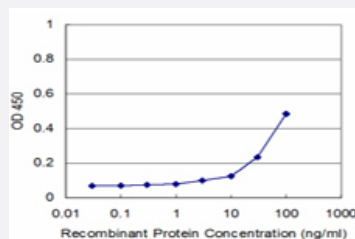


MDS1 monoclonal antibody (M01), clone 1E7

Catalog # H00004197-M01

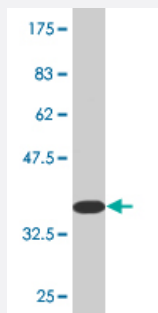
Size 100 ug

Applications



Sandwich ELISA (Recombinant protein)

Detection limit for recombinant GST tagged MDS1 is approximately 3ng/ml as a capture antibody.



Western Blot detection against Immunogen (35.64 KDa) .

Specification

Product Description	Mouse monoclonal antibody raised against a partial recombinant MDS1.
Immunogen	MDS1 (NP_004982, 80 a.a. ~ 169 a.a) partial recombinant protein with GST tag. MW of the GST tag alone is 26 KDa.
Sequence	FELRESNMPGAGLGWTKRKIEVGEKFGPYVGEQRSNLKDPSYGWEVHLPRSRVSVHSWLYLG KRSSDVGIAFSQADVMPGLQCAFLS
Host	Mouse
Reactivity	Human
Isotype	IgG2b Kappa

Quality Control Testing

Antibody Reactive Against Recombinant Protein.
Western Blot detection against Immunogen (35.64 KDa) .

Storage Buffer

In 1x PBS, pH 7.4

Storage Instruction

Store at -20°C or lower. Aliquot to avoid repeated freezing and thawing.

Applications

- Western Blot (Recombinant protein)

[Protocol Download](#)

- Sandwich ELISA (Recombinant protein)

Detection limit for recombinant GST tagged MDS1 is approximately 3ng/ml as a capture antibody.

[Protocol Download](#)

- ELISA

Gene Info — MDS1

Entrez GeneID

[4197](#)

GeneBank Accession#

[NM_004991](#)

Protein Accession#

[NP_004982](#)

Gene Name

MDS1

Gene Alias

MDS1-EVI1, PRDM3

Gene Description

myelodysplasia syndrome 1

Omim ID

[600049](#)

Gene Ontology

[Hyperlink](#)

Other Designations

myelodysplasia syndrome protein 1|myelodysplasia syndrome-associated protein 1