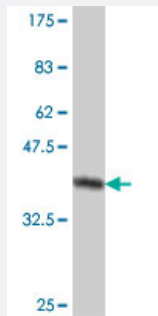


ADAM11 polyclonal antibody (A01)

Catalog # H00004185-A01

Size 50 uL

Applications



Western Blot detection against Immunogen (37.55 KDa) .

Specification

Product Description	Mouse polyclonal antibody raised against a partial recombinant ADAM11.
Immunogen	ADAM11 (NP_002381, 230 a.a. ~ 333 a.a) partial recombinant protein with GST tag.
Sequence	GHPTVHSETKYVELMINDHQLFEQMRQSVVLTSNFAKSVVNLADVVIKEQLNTRIVLVAMETWAD GDKIQVQDDLLETARLMVYRREGLPEPSDATHLFSGR
Host	Mouse
Reactivity	Human
Interspecies Antigen Sequence	Mouse (100); Rat (100)
Quality Control Testing	Antibody Reactive Against Recombinant Protein. Western Blot detection against Immunogen (37.55 KDa) .
Storage Buffer	50 % glycerol
Storage Instruction	Store at -20°C or lower. Aliquot to avoid repeated freezing and thawing.

Applications

- Western Blot (Recombinant protein)

[Protocol Download](#)

- ELISA

Gene Info — ADAM11

Entrez GeneID [4185](#)

GeneBank Accession# [NM_002390](#)

Protein Accession# [NP_002381](#)

Gene Name ADAM11

Gene Alias MDC

Gene Description ADAM metalloproteinase domain 11

Omim ID [155120](#)

Gene Ontology [Hyperlink](#)

Gene Summary This gene encodes a member of the ADAM (a disintegrin and metalloprotease) protein family. Members of this family are membrane-anchored proteins structurally related to snake venom disintegrins, and have been implicated in a variety of biological processes involving cell-cell and cell-matrix interactions, including fertilization, muscle development, and neurogenesis. This gene represents a candidate tumor suppressor gene for human breast cancer based on its location within a minimal region of chromosome 17q21 previously defined by tumor deletion mapping. [provided by RefSeq]

Other Designations a disintegrin and metalloproteinase domain 11|metalloproteinase-like, disintegrin-like, cysteine-rich protein

Disease

- [Alcoholism](#)