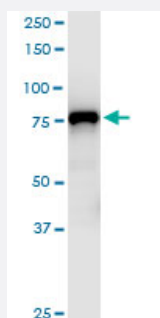


MCM7 monoclonal antibody (M03), clone 1G1

Catalog # H00004176-M03

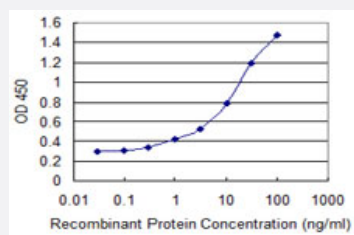
Size 100 ug

Applications



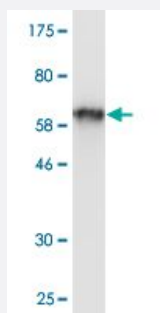
Western Blot (Cell lysate)

MCM7 monoclonal antibody (M03), clone 1G1. Western Blot analysis of MCM7 expression in HeLa S3 NE (Cat # L013V3).



Sandwich ELISA (Recombinant protein)

Detection limit for recombinant GST tagged MCM7 is 0.1 ng/ml as a capture antibody.



Western Blot detection against Immunogen (68.53 KDa).

Specification

Product Description

Mouse monoclonal antibody raised against a full-length recombinant MCM7.

Immunogen	MCM7 (AAH09398, 1 a.a. ~ 389 a.a) full-length recombinant protein with GST tag. MW of the GST tag alone is 26 KDa.
Sequence	MALKDYALEKEKVKKFLQEFYQDDELGKKQFKYGNQLVRLAHREQVALYVDLDDVAEDDPELV DSICENARRYAKLFADAVQELLPQYKEREVVNKDVLVDVYIEHRLMMEQSRDPGMVRSPQNQYP AELMRRFELYFGPSSSKPRVIREVRADSVGKLVTVRGMTRVSEVKPKMNVATYTCDCQCGAETY QPIQSPTFMPLIMCPSQECQTNRSGGRLYLQTRGSRFIKFQEMKMQEHSDQVPVGNIPRSITVLVE GENTRIAQPGDHVSVTGIFLPILRTGFRQVVQGLLSETYLEAHRVKMNKSEDDDESGAGELTREELR QIADVIFATVRELVSGGRSVRFSEAEQRCVSRGFTPAQFQAALDEYEEELNVWQVNASRTRITFV
Host	Mouse
Reactivity	Human
Isotype	IgG2a Kappa
Quality Control Testing	Antibody Reactive Against Recombinant Protein. Western Blot detection against Immunogen (68.53 KDa) .
Storage Buffer	In 1x PBS, pH 7.4
Storage Instruction	Store at -20°C or lower. Aliquot to avoid repeated freezing and thawing.

Applications

- Western Blot (Cell lysate)

MCM7 monoclonal antibody (M03), clone 1G1. Western Blot analysis of MCM7 expression in Hela S3 NE(Cat # L013V3).

[Protocol Download](#)

- Western Blot (Recombinant protein)

[Protocol Download](#)

- Sandwich ELISA (Recombinant protein)

Detection limit for recombinant GST tagged MCM7 is 0.1 ng/ml as a capture antibody.

[Protocol Download](#)

- ELISA

Gene Info — MCM7

Entrez GeneID

[4176](#)

GeneBank Accession#	BC009398
Protein Accession#	AAH09398
Gene Name	MCM7
Gene Alias	CDABP0042, CDC47, MCM2, P1.1-MCM3, P1CDC47, P85MCM, PNAS-146
Gene Description	minichromosome maintenance complex component 7
Omim ID	600592
Gene Ontology	Hyperlink
Gene Summary	<p>The protein encoded by this gene is one of the highly conserved mini-chromosome maintenance proteins (MCM) that are essential for the initiation of eukaryotic genome replication. The hexameric protein complex formed by the MCM proteins is a key component of the pre-replication complex (pre_RC) and may be involved in the formation of replication forks and in the recruitment of other DNA replication related proteins. The MCM complex consisting of this protein and MCM2, 4 and 6 proteins possesses DNA helicase activity, and may act as a DNA unwinding enzyme. Cyclin D1-dependent kinase, CDK4, is found to associate with this protein, and may regulate the binding of this protein with the tumorsuppressor protein RB1/RB. Alternatively spliced transcript variants encoding distinct isoforms have been reported. [provided by RefSeq]</p>
Other Designations	DNA replication licensing factor MCM7 MCM7 minichromosome maintenance deficient 7 homolog of S. cerevisiae Cdc47 minichromosome maintenance deficient 7

Pathway

- [Cell cycle](#)
- [DNA replication](#)

Disease

- [Autistic Disorder](#)
- [Genetic Predisposition to Disease](#)