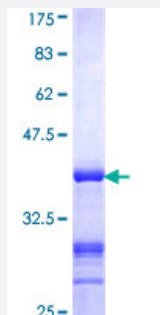


# MCM4 (Human) Recombinant Protein (Q01)

Catalog # H00004173-Q01

Size 25 ug, 10 ug

## Applications



## Specification

<b>Product Description</b>	Human MCM4 partial ORF ( AAH31061, 267 a.a. - 366 a.a.) recombinant protein with GST-tag at N-terminal.
<b>Sequence</b>	KTKNMRNLNPEDIDQLITISGMVIRTSQLIPEMQEAFQVCQVCAHTTRVEMDRGRIAEP SVCGRCHT THSMALIHNRSLFSDKQMIKLQESPEDMPAGQT
<b>Host</b>	Wheat Germ (in vitro)
<b>Theoretical MW (kDa)</b>	36.63
<b>Preparation Method</b>	<a href="#">in vitro wheat germ expression system</a>
<b>Purification</b>	Glutathione Sepharose 4 Fast Flow
<b>Quality Control Testing</b>	12.5% SDS-PAGE Stained with Coomassie Blue.
<b>Storage Buffer</b>	50 mM Tris-HCl, 10 mM reduced Glutathione, pH=8.0 in the elution buffer.
<b>Storage Instruction</b>	Store at -80°C. Aliquot to avoid repeated freezing and thawing.
<b>Note</b>	Best use within three months from the date of receipt of this protein.

## Applications

- Enzyme-linked Immunoabsorbent Assay
- Western Blot (Recombinant protein)
- Antibody Production
- Protein Array

## Gene Info — MCM4

Entrez GeneID [4173](#)

GeneBank Accession# [BC031061](#)

Protein Accession# [AAH31061](#)

Gene Name MCM4

Gene Alias CDC21, CDC54, MGC33310, P1-CDC21, hCdc21

Gene Description minichromosome maintenance complex component 4

Omim ID [602638](#)

Gene Ontology [Hyperlink](#)

**Gene Summary**

The protein encoded by this gene is one of the highly conserved mini-chromosome maintenance proteins (MCM) that are essential for the initiation of eukaryotic genome replication. The hexameric protein complex formed by MCM proteins is a key component of the pre-replication complex (pre-RC) and may be involved in the formation of replication forks and in the recruitment of other DNA replication related proteins. The MCM complex consisting of this protein and MCM2, 6 and 7 proteins possesses DNA helicase activity, and may act as a DNA unwinding enzyme. The phosphorylation of this protein by CDC2 kinase reduces the DNA helicase activity and chromatin binding of the MCM complex. This gene is mapped to a region on the chromosome 8 head-to-head next to the PRKDC/DNA-PK, a DNA-activated protein kinase involved in the repair of DNA double-strand breaks. Alternatively spliced transcript variants encoding the same protein have been reported. [provided by RefSeq]

**Other Designations**

DNA replication licensing factor MCM4|MCM4 minichromosome maintenance deficient 4|homolog of S. pombe cell division cycle 21|minichromosome maintenance deficient 4

## Pathway

- [Cell cycle](#)
- [DNA replication](#)

## Disease

- [Genetic Predisposition to Disease](#)
- [Hematologic Diseases](#)
- [Occupational Diseases](#)