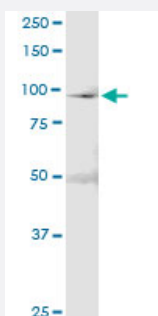


MCM4 (Human) IP-WB Antibody Pair

Catalog # H00004173-PW1

Size 1 Set

Applications



Immunoprecipitation of MCM4 transfected lysate using rabbit polyclonal anti-MCM4 and Protein A Magnetic Bead ([U0007](#)), and immunoblotted with mouse purified polyclonal anti-MCM4.

Specification

Product Description	This IP-WB antibody pair set comes with one antibody for immunoprecipitation and another to detect the precipitated protein in western blot.
Reactivity	Human
Quality Control Testing	Immunoprecipitation-Western Blot (IP-WB) Immunoprecipitation of MCM4 transfected lysate using rabbit polyclonal anti-MCM4 and Protein A Magnetic Bead (U0007), and immunoblotted with mouse purified polyclonal anti-MCM4.
Supplied Product	Antibody pair set content: 1. Antibody pair for IP: rabbit polyclonal anti-MCM4 (300 ul) 2. Antibody pair for WB: mouse purified polyclonal anti-MCM4 (50 ug)
Storage Instruction	Store reagents of the antibody pair set at -20°C or lower. Please aliquot to avoid repeated freeze thaw cycle. Reagents should be returned to -20°C storage immediately after use.

Applications

- Immunoprecipitation-Western Blot

[Protocol Download](#)

Gene Info — MCM4

Entrez GeneID [4173](#)

Gene Name MCM4

Gene Alias CDC21, CDC54, MGC33310, P1-CDC21, hCdc21

Gene Description minichromosome maintenance complex component 4

Omim ID [602638](#)

Gene Ontology [Hyperlink](#)

Gene Summary

The protein encoded by this gene is one of the highly conserved mini-chromosome maintenance proteins (MCM) that are essential for the initiation of eukaryotic genome replication. The hexameric protein complex formed by MCM proteins is a key component of the pre-replication complex (pre-RC) and may be involved in the formation of replication forks and in the recruitment of other DNA replication related proteins. The MCM complex consisting of this protein and MCM2, 6 and 7 proteins possesses DNA helicase activity, and may act as a DNA unwinding enzyme. The phosphorylation of this protein by CDC2 kinase reduces the DNA helicase activity and chromatin binding of the MCM complex. This gene is mapped to a region on the chromosome 8 head-to-head next to the PRKDC/DNA-PK, a DNA-activated protein kinase involved in the repair of DNA double-strand breaks. Alternatively spliced transcript variants encoding the same protein have been reported. [provided by RefSeq]

Other Designations

DNA replication licensing factor MCM4|MCM4 minichromosome maintenance deficient 4|homolog of S. pombe cell division cycle 21|minichromosome maintenance deficient 4

Pathway

- [Cell cycle](#)
- [DNA replication](#)

Disease

- [Genetic Predisposition to Disease](#)
- [Hematologic Diseases](#)
- [Occupational Diseases](#)