

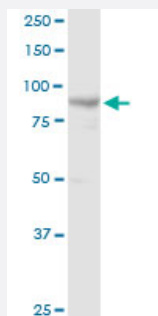
MaxPab®

MCM4 purified MaxPab rabbit polyclonal antibody (D01P)

Catalog # H00004173-D01P

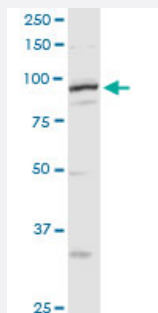
Size 100 ug

Applications



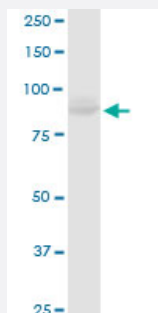
Western Blot (Tissue lysate)

MCM4 MaxPab rabbit polyclonal antibody. Western Blot analysis of MCM4 expression in human kidney.



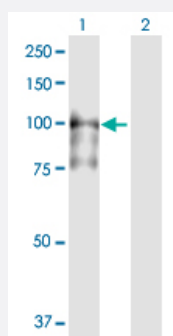
Western Blot (Tissue lysate)

MCM4 MaxPab rabbit polyclonal antibody. Western Blot analysis of MCM4 expression in mouse testis.



Western Blot (Cell lysate)

MCM4 MaxPab rabbit polyclonal antibody. Western Blot analysis of MCM4 expression in HeLa.

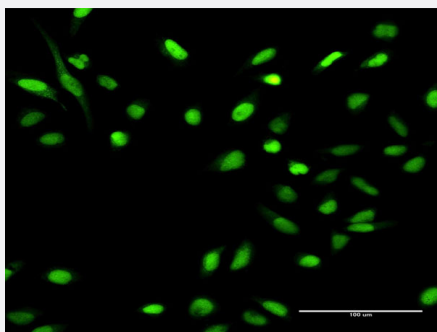


Western Blot (Transfected lysate)

Western Blot analysis of MCM4 expression in transfected 293T cell line ([H00004173-T02](#)) by MCM4 MaxPab polyclonal antibody.

Lane 1: MCM4 transfected lysate(96.60 KDa).

Lane 2: Non-transfected lysate.



Immunofluorescence

Immunofluorescence of purified MaxPab antibody to MCM4 on HeLa cell.
[antibody concentration 20 ug/ml]

Specification

Product Description	Rabbit polyclonal antibody raised against a full-length human MCM4 protein.
Immunogen	MCM4 (AAH31061.1, 1 a.a. ~ 863 a.a) full-length human protein.
Sequence	MSSPASTPSRRGSRRGRATPAQTPRSEDARSSPSQRRRGEDSTSTGELQPMPTSPGVDLQSP AAQDVLFFSSPPQMHSAPLDFDVSSPLTYGTPSSRVEGTPRSGVRGTPVRQRPDLGSAQKGLQ VDLQSDGAAAEDIVASEQSLGQKLVIWGTDVNVAACKENFQRFQRFIDPLAKEEENVGIDITEPL YMQRLGEINVIGEPFLNVNCEHIKSFDKNLYRQLISYPQEVIPTFDMAVNEIFFDRYPDSILEHQIQVR PFNALKTKNMRNLNPEDIDQLITISGMVIRTSQLIPEMQEAFQCCQVCAHTTRVEMDRGRIAEP SVC GRCHTTHSMALIHNRSLFSDKQMIKLQESPEDMPAGQTPHTVILFAHNDLVQKVPQDVRNVNVTGIY RAVPIRVNPRVSNVKSVMYKTHIDVIHYRKTDARLHGLDEEAEQKLFSEKRVELLKELSRKPDYER LASALAPSIYEHEDIKKGILLQLFGGTRKDFSHTGRGKFRAEINILLCGDPGTSKSQLQYVYNLVPR GQYTSKGSSAVGLTAYVMKDPETRQLVLQTGALVLSDNIGCCIDEFDKMNESTRSVLHEVMEQ QTLIAKAGIICQLNARTSVLAAANPIESQWNPCKTTIENIQLPHTLLSRFDLIFLMLDPQDEAYDRRL AHHLVALYYQSEEQAEELLDMAVLKDYIAYAHSTIMPRLSEEASQALIEAYVDMRKIGSSRGMVS AYPRQLESLIRLAEAHAKVRLSNKVEAIDVEEAKRLHREALKQSATDPRTGVDISILTTGMSATSRK RKEELAEALKKLILSKGKTPALKYQQLFEDIRGQSDIAITKDMFEEALRALADDDFLVTGKTVRLL
Host	Rabbit
Reactivity	Human, Mouse
Quality Control Testing	Antibody reactive against mammalian transfected lysate.
Storage Buffer	In 1x PBS, pH 7.4
Storage Instruction	Store at -20°C or lower. Aliquot to avoid repeated freezing and thawing.

Applications

- Western Blot (Tissue lysate)

MCM4 MaxPab rabbit polyclonal antibody. Western Blot analysis of MCM4 expression in human kidney.

[Protocol Download](#)

- Western Blot (Tissue lysate)

MCM4 MaxPab rabbit polyclonal antibody. Western Blot analysis of MCM4 expression in mouse testis.

[Protocol Download](#)

- Western Blot (Cell lysate)

MCM4 MaxPab rabbit polyclonal antibody. Western Blot analysis of MCM4 expression in HeLa.

[Protocol Download](#)

- Western Blot (Transfected lysate)

Western Blot analysis of MCM4 expression in transfected 293T cell line ([H00004173-T02](#)) by MCM4 MaxPab polyclonal antibody.

Lane 1: MCM4 transfected lysate(96.60 KDa).

Lane 2: Non-transfected lysate.

[Protocol Download](#)

- Immunofluorescence

Immunofluorescence of purified MaxPab antibody to MCM4 on HeLa cell. [antibody concentration 20 ug/ml]

Gene Info — MCM4

Entrez GeneID [4173](#)

GeneBank Accession# [BC031061](#)

Protein Accession# [AAH31061.1](#)

Gene Name MCM4

Gene Alias CDC21, CDC54, MGC33310, P1-CDC21, hCdc21

Gene Description minichromosome maintenance complex component 4

Omim ID [602638](#)

Gene Ontology [Hyperlink](#)

Gene Summary

The protein encoded by this gene is one of the highly conserved mini-chromosome maintenance proteins (MCM) that are essential for the initiation of eukaryotic genome replication. The hexameric protein complex formed by MCM proteins is a key component of the pre-replication complex (pre-RC) and may be involved in the formation of replication forks and in the recruitment of other DNA replication related proteins. The MCM complex consisting of this protein and MCM2, 6 and 7 proteins possesses DNA helicase activity, and may act as a DNA unwinding enzyme. The phosphorylation of this protein by CDC2 kinase reduces the DNA helicase activity and chromatin binding of the MCM complex. This gene is mapped to a region on the chromosome 8 head-to-head next to the PRKDC/DNA-PK, a DNA-activated protein kinase involved in the repair of DNA double-strand breaks. Alternatively spliced transcript variants encoding the same protein have been reported. [provided by RefSeq]

Other Designations

DNA replication licensing factor MCM4|MCM4 minichromosome maintenance deficient 4|homolog of S. pombe cell division cycle 21|minichromosome maintenance deficient 4

Pathway

- [Cell cycle](#)
- [DNA replication](#)

Disease

- [Genetic Predisposition to Disease](#)
- [Hematologic Diseases](#)
- [Occupational Diseases](#)