

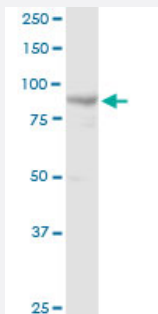
MaxPab®

MCM4 MaxPab rabbit polyclonal antibody (D01)

Catalog # H00004173-D01

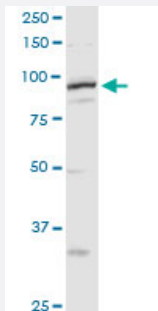
Size 100 uL

Applications



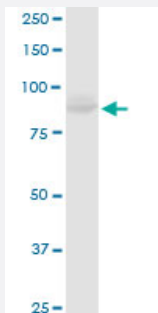
Western Blot (Tissue lysate)

MCM4 MaxPab rabbit polyclonal antibody. Western Blot analysis of MCM4 expression in human kidney.



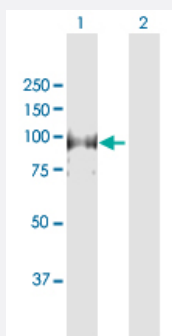
Western Blot (Tissue lysate)

MCM4 MaxPab rabbit polyclonal antibody. Western Blot analysis of MCM4 expression in mouse testis.



Western Blot (Cell lysate)

MCM4 MaxPab rabbit polyclonal antibody. Western Blot analysis of MCM4 expression in HeLa.

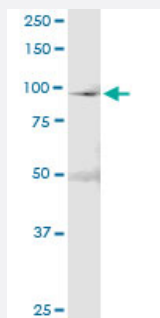


Western Blot (Transfected lysate)

Western Blot analysis of MCM4 expression in transfected 293T cell line ([H00004173-T02](#)) by MCM4 MaxPab polyclonal antibody.

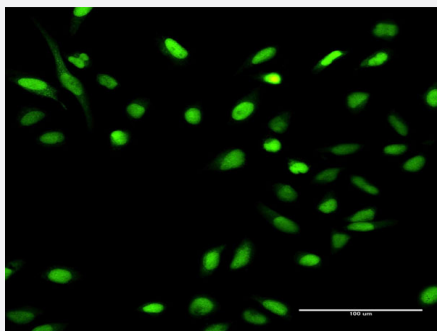
Lane 1: MCM4 transfected lysate(96.6 KDa).

Lane 2: Non-transfected lysate.



Immunoprecipitation

Immunoprecipitation of MCM4 transfected lysate using anti-MCM4 MaxPab rabbit polyclonal antibody and Protein A Magnetic Bead, and immunoblotted with MCM4 purified MaxPab mouse polyclonal antibody (B01P) ([H00004173-B01P](#)).



Immunofluorescence

Immunofluorescence of purified MaxPab antibody to MCM4 on HeLa cell. [antibody concentration 20 ug/ml]

Specification

Product Description	Rabbit polyclonal antibody raised against a full-length human MCM4 protein.
Immunogen	MCM4 (AAH31061.1, 1 a.a. ~ 863 a.a) full-length human protein.
Sequence	MSSPASTPSRRGSRRGRATPAQTPRSEDARSSPSQRRRGEDSTSTGELQPMPTSPGVDLQSP AAQDVLFFSSPPQMHSSAIPLDFDVSSPLTYGTPSSRVEGTPRSGVVRGTPVRQRPDLGSAQKGLQ VDLQSDGAAAEDIVASEQSLGQKLVIWGTDVNVAACKENFQRFLQRFIDPLAKEEENVGIDITEPL YMQRLGEINVIGEPFLNVNCEHIKSFKNLYRQLISYPQEVPTFDMAVNEIFFDRYPDSILEHQIQVR PFNALKTKNMRNLNPEDIDQLITISGMVIRTSQLIPEMQEAFFQCQVCAHTTRVEMDRGRIAPSV GRCHTHSMALIHNRSLFSDKQMIKLQESPEDMPAGQTPHTVILFAHNDLVDKVQPGDRVNVGTGIY RAVPIRVNPRVSNVKSVMYKTHIDVIHYRKTDARLHGLDEEAEQKLFSEKRVLLKELSRKPDYER LASALAPSIYEHEDIKKGILLQLFGGTRKDFSHTGRGKFRAEINILLCGDPGTSKSQLQYVYNLVPR GQYTSKGSSAVGLTAYVMKDPETRLVLQTGALVLSDNIGCCIDEFDKMNESTRSVLHEVMEQ QTLIAKAGIICQLNARTSVLAAANPIESQWNPKKTTIENIQLPHTLLSRFDLIFLMLDPQDEAYDRRL AHHLVALYYQSEEQAEELLDMAVLKDYIAHSTIMPRLSEEASQALIEAYVDMRKIGSSRGMVS AYPRQLESLRLAEAHAKVRLSNKVEAIDVEEAKRLHREALKQSATDPRTGVDISILTTGMSATSRK RKEELAEALKKLILSKGKTPALKYQQLFEDIRGQSDAITKDMFEEALRALADDDFLTVTGKTVRL
Host	Rabbit
Reactivity	Human, Mouse
Quality Control Testing	Antibody reactive against mammalian transfected lysate.
Storage Buffer	No additive

Storage Instruction

Store at -20°C or lower. Aliquot to avoid repeated freezing and thawing.

Applications

- Western Blot (Tissue lysate)

MCM4 MaxPab rabbit polyclonal antibody. Western Blot analysis of MCM4 expression in human kidney.

[Protocol Download](#)

- Western Blot (Tissue lysate)

MCM4 MaxPab rabbit polyclonal antibody. Western Blot analysis of MCM4 expression in mouse testis.

[Protocol Download](#)

- Western Blot (Cell lysate)

MCM4 MaxPab rabbit polyclonal antibody. Western Blot analysis of MCM4 expression in HeLa.

[Protocol Download](#)

- Western Blot (Transfected lysate)

Western Blot analysis of MCM4 expression in transfected 293T cell line ([H00004173-T02](#)) by MCM4 MaxPab polyclonal antibody.

Lane 1: MCM4 transfected lysate(96.6 KDa).

Lane 2: Non-transfected lysate.

[Protocol Download](#)

- Immunoprecipitation

Immunoprecipitation of MCM4 transfected lysate using anti-MCM4 MaxPab rabbit polyclonal antibody and Protein A Magnetic Bead, and immunoblotted with MCM4 purified MaxPab mouse polyclonal antibody (B01P) ([H00004173-B01P](#)).

[Protocol Download](#)

- Immunofluorescence

Immunofluorescence of purified MaxPab antibody to MCM4 on HeLa cell. [antibody concentration 20 ug/ml]

Gene Info — MCM4

Entrez GeneID

[4173](#)

GeneBank Accession#	BC031061.1
Protein Accession#	AAH31061.1
Gene Name	MCM4
Gene Alias	CDC21, CDC54, MGC33310, P1-CDC21, hCdc21
Gene Description	minichromosome maintenance complex component 4
Omim ID	602638
Gene Ontology	Hyperlink
Gene Summary	<p>The protein encoded by this gene is one of the highly conserved mini-chromosome maintenance proteins (MCM) that are essential for the initiation of eukaryotic genome replication. The hexameric protein complex formed by MCM proteins is a key component of the pre-replication complex (pre-RC) and may be involved in the formation of replication forks and in the recruitment of other DNA replication related proteins. The MCM complex consisting of this protein and MCM2, 6 and 7 proteins possesses DNA helicase activity, and may act as a DNA unwinding enzyme. The phosphorylation of this protein by CDC2 kinase reduces the DNA helicase activity and chromatin binding of the MCM complex. This gene is mapped to a region on the chromosome 8 head-to-head next to the PRKDC/DNA-PK, a DNA-activated protein kinase involved in the repair of DNA double-strand breaks. Alternatively spliced transcript variants encoding the same protein have been reported. [provided by RefSeq]</p>
Other Designations	DNA replication licensing factor MCM4 MCM4 minichromosome maintenance deficient 4 homolog of S. pombe cell division cycle 21 minichromosome maintenance deficient 4

Pathway

- [Cell cycle](#)
- [DNA replication](#)

Disease

- [Genetic Predisposition to Disease](#)
- [Hematologic Diseases](#)
- [Occupational Diseases](#)