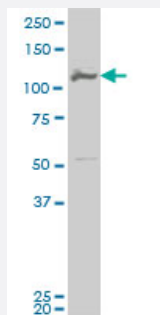


MCM3 monoclonal antibody (M02), clone 2A11

Catalog # H00004172-M02

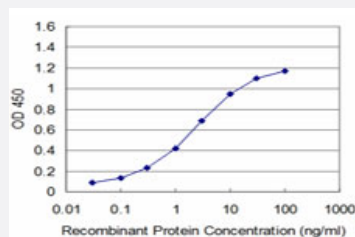
Size 100 ug

Applications



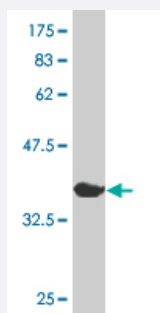
Western Blot (Cell lysate)

MCM3 monoclonal antibody (M02), clone 2A11 Western Blot analysis of MCM3 expression in HeLa S3 NE (Cat # L013V3).



Sandwich ELISA (Recombinant protein)

Detection limit for recombinant GST tagged MCM3 is approximately 0.1ng/ml as a capture antibody.



Western Blot detection against Immunogen (37.84 KDa) .

Specification

Product Description

Mouse monoclonal antibody raised against a partial recombinant MCM3.

Immunogen	MCM3 (NP_002379, 699 a.a. ~ 808 a.a) partial recombinant protein with GST tag. MW of the GST tag alone is 26 KDa.
Sequence	AKDGDSYDPYDFSDTEEEEMPQVHTPKTADSQETKESQKVELSESRLKAFKVALLDVFREAHAQ SIGMNRLTESINRDSEEPFSSVEIQALSKMQDDNQVMVSEGIIFLI
Host	Mouse
Reactivity	Human
Interspecies Antigen Sequence	Mouse (75); Rat (79)
Isotype	IgG2a Lambda
Quality Control Testing	Antibody Reactive Against Recombinant Protein. Western Blot detection against Immunogen (37.84 KDa) .
Storage Buffer	In 1x PBS, pH 7.4
Storage Instruction	Store at -20°C or lower. Aliquot to avoid repeated freezing and thawing.

Applications

- Western Blot (Cell lysate)

MCM3 monoclonal antibody (M02), clone 2A11 Western Blot analysis of MCM3 expression in Hela S3 NE (Cat # L013V3).

[Protocol Download](#)

- Western Blot (Recombinant protein)

[Protocol Download](#)

- Sandwich ELISA (Recombinant protein)

Detection limit for recombinant GST tagged MCM3 is approximately 0.1ng/ml as a capture antibody.

[Protocol Download](#)

- ELISA

Gene Info — MCM3

Entrez GeneID [4172](#)

GeneBank Accession#	NM_002388
Protein Accession#	NP_002379
Gene Name	MCM3
Gene Alias	HCC5, MGC1157, P1-MCM3, P1.h, RLFB
Gene Description	minichromosome maintenance complex component 3
Omim ID	602693
Gene Ontology	Hyperlink
Gene Summary	<p>The protein encoded by this gene is one of the highly conserved mini-chromosome maintenance proteins (MCM) that are involved in the initiation of eukaryotic genome replication. The hexameric protein complex formed by MCM proteins is a key component of the pre-replication complex (pre-RC) and may be involved in the formation of replication forks and in the recruitment of other DNA replication related proteins. This protein is a subunit of the protein complex that consists of MCM2-7. It has been shown to interact directly with MCM5/CDC46. This protein also interacts with, and thus is acetylated by MCM3AP, a chromatin-associated acetyltransferase. The acetylation of this protein inhibits the initiation of DNA replication and cell cycle progression. [provided by RefSeq]</p>
Other Designations	DNA polymerase alpha holoenzyme-associated protein P1 DNA replication factor MCM3 MCM3 minichromosome maintenance deficient 3 OTTHUMP00000016600 cervical cancer proto-oncogene 5 hRlf beta subunit minichromosome maintenance deficient 3 replication licensin

Pathway

- [Cell cycle](#)
- [DNA replication](#)