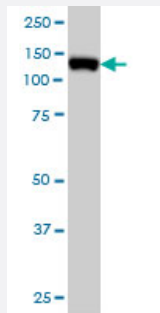


MCM2 monoclonal antibody (M01), clone 6A8

Catalog # H00004171-M01

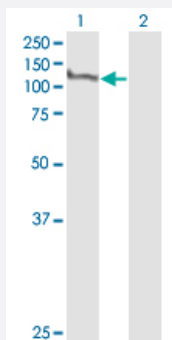
Size 100 ug

Applications



Western Blot (Cell lysate)

MCM2 monoclonal antibody (M01), clone 6A8 Western Blot analysis of MCM2 expression in HeLa S3 NE (Cat # L013V3).

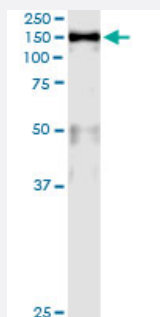


Western Blot (Transfected lysate)

Western Blot analysis of MCM2 expression in transfected 293T cell line by MCM2 monoclonal antibody (M01), clone 6A8.

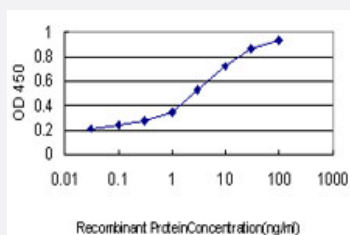
Lane 1: MCM2 transfected lysate(101.9 KDa).

Lane 2: Non-transfected lysate.



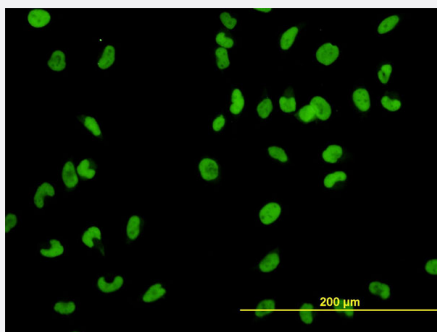
Immunoprecipitation

Immunoprecipitation of MCM2 transfected lysate using anti-MCM2 monoclonal antibody and Protein A Magnetic Bead, and immunoblotted with MCM2 MaxPab rabbit polyclonal antibody.



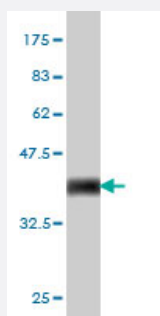
Sandwich ELISA (Recombinant protein)

Detection limit for recombinant GST tagged MCM2 is approximately 0.1ng/ml as a capture antibody.



Immunofluorescence

Immunofluorescence of monoclonal antibody to MCM2 on HeLa cell. [antibody concentration 10 ug/ml]



Western Blot detection against Immunogen (36.63 KDa) .

Specification

Product Description	Mouse monoclonal antibody raised against a partial recombinant MCM2.
Immunogen	MCM2 (AAH07670, 805 a.a. ~ 904 a.a) partial recombinant protein with GST tag. MW of the GST tag alone is 26 KDa.
Sequence	TQKFSVMRSMRKTFARYLSFRRDNNELLFILKQLVAEQVTYQRNRF GAQQDTIEVPEKDLVDKARQINIHNL SAFYDSE LFRMNKFS HDLKRKMILQQF
Host	Mouse
Reactivity	Human
Interspecies Antigen Sequence	Mouse (92); Rat (92)
Isotype	IgG2a Kappa
Quality Control Testing	Antibody Reactive Against Recombinant Protein. Western Blot detection against Immunogen (36.63 KDa) .
Storage Buffer	In 1x PBS, pH 7.4
Storage Instruction	Store at -20°C or lower. Aliquot to avoid repeated freezing and thawing.

Applications

- Western Blot (Cell lysate)

MCM2 monoclonal antibody (M01), clone 6A8 Western Blot analysis of MCM2 expression in Hela S3 NE (Cat # L013V3).

[Protocol Download](#)

- Western Blot (Transfected lysate)

Western Blot analysis of MCM2 expression in transfected 293T cell line by MCM2 monoclonal antibody (M01), clone 6A8.

Lane 1: MCM2 transfected lysate(101.9 KDa).

Lane 2: Non-transfected lysate.

[Protocol Download](#)

- Western Blot (Recombinant protein)

[Protocol Download](#)

- Immunoprecipitation

Immunoprecipitation of MCM2 transfected lysate using anti-MCM2 monoclonal antibody and Protein A Magnetic Bead, and immunoblotted with MCM2 MaxPab rabbit polyclonal antibody.

[Protocol Download](#)

- Sandwich ELISA (Recombinant protein)

Detection limit for recombinant GST tagged MCM2 is approximately 0.1ng/ml as a capture antibody.

[Protocol Download](#)

- ELISA

- Immunofluorescence

Immunofluorescence of monoclonal antibody to MCM2 on HeLa cell. [antibody concentration 10 ug/ml]

Gene Info — MCM2

Entrez GeneID	4171
---------------	----------------------

GeneBank Accession#	BC007670
---------------------	--------------------------

Protein Accession#	AAH07670
--------------------	--------------------------

Gene Name	MCM2
Gene Alias	BM28, CCNL1, CDCL1, D3S3194, KIAA0030, MGC10606, MITOTIN, cdc19
Gene Description	minichromosome maintenance complex component 2
Omim ID	116945
Gene Ontology	Hyperlink
Gene Summary	<p>The protein encoded by this gene is one of the highly conserved mini-chromosome maintenance proteins (MCM) that are involved in the initiation of eukaryotic genome replication. The hexameric protein complex formed by MCM proteins is a key component of the pre-replication complex (pre-RC) and may be involved in the formation of replication forks and in the recruitment of other DNA replication related proteins. This protein forms a complex with MCM4, 6, and 7, and has been shown to regulate the helicase activity of the complex. This protein is phosphorylated, and thus regulated by, protein kinases CDC2 and CDC7. [provided by RefSeq]</p>
Other Designations	DNA replication licensing factor MCM2 MCM2 minichromosome maintenance deficient 2, mitotin cell division cycle-like 1 cyclin-like 1 minichromosome maintenance deficient 2 (mitotin) nuclear protein BM28

Publication Reference

- [C16orf72/HAPSTR1/TAPR1 functions with BRCA1/Senataxin to modulate replication-associated R-loops and confer resistance to PARP disruption.](#)

Abhishek Bharadwaj Sharma, Muhammad Khairul Ramlee, Joel Kosmin, Martin R Higgs, Amy Wolstenholme, George E Ronson, Dylan Jones, Daniel Ebner, Noor Shamkhi, David Sims, Paul W G Wijnhoven, Josep V Forment, Ian Gibbs-Seymour, Nicholas D Lakin.

Nature Communications 2023 Aug; 14(1):5003.

Application: N/A, N/A, N/A

Pathway

- [Cell cycle](#)
- [DNA replication](#)

Disease

- [Genetic Predisposition to Disease](#)
- [Ovarian Neoplasms](#)