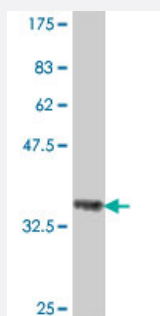


MCM2 polyclonal antibody (A01)

Catalog # H00004171-A01

Size 50 uL

Applications



Western Blot detection against Immunogen (37 KDa) .

Specification

Product Description	Mouse polyclonal antibody raised against a partial recombinant MCM2.
Immunogen	MCM2 (AAH07670, 805 a.a. ~ 904 a.a) partial recombinant protein with GST tag.
Sequence	TQKFSVMRSMRKTFARYLSFRRDNNELLFILKQLVAEQVTYQRNRFGAQQDTIEVPEKDLVDKA RQNIHNLSAFYDSELFMRNKFSDHLKRKMILQQF
Host	Mouse
Reactivity	Human
Interspecies Antigen Sequence	Mouse (92); Rat (92)
Quality Control Testing	Antibody Reactive Against Recombinant Protein. Western Blot detection against Immunogen (37 KDa) .
Storage Buffer	50 % glycerol
Storage Instruction	Store at -20°C or lower. Aliquot to avoid repeated freezing and thawing.

Applications

- Western Blot (Recombinant protein)

[Protocol Download](#)

- ELISA

Gene Info — MCM2

Entrez GeneID [4171](#)

GeneBank Accession# [BC007670](#)

Protein Accession# [AAH07670](#)

Gene Name MCM2

Gene Alias BM28, CCNL1, CDCL1, D3S3194, KIAA0030, MGC10606, MITOTIN, cdc19

Gene Description minichromosome maintenance complex component 2

Omim ID [116945](#)

Gene Ontology [Hyperlink](#)

Gene Summary The protein encoded by this gene is one of the highly conserved mini-chromosome maintenance proteins (MCM) that are involved in the initiation of eukaryotic genome replication. The hexameric protein complex formed by MCM proteins is a key component of the pre-replication complex (pre-RC) and may be involved in the formation of replication forks and in the recruitment of other DNA replication related proteins. This protein forms a complex with MCM4, 6, and 7, and has been shown to regulate the helicase activity of the complex. This protein is phosphorylated, and thus regulated by, protein kinases CDC2 and CDC7. [provided by RefSeq]

Other Designations DNA replication licensing factor MCM2|MCM2 minichromosome maintenance deficient 2, mitotin|cell division cycle-like 1|cyclin-like 1|minichromosome maintenance deficient 2 (mitotin)|nuclear protein BM28

Publication Reference

- [Novel autoantibody markers for early and seronegative rheumatoid arthritis.](#)

Klaartje Somers, Piet Geusens, Dirk Elewaut, Filip De Keyser, Jean-Luc Rummens, Marieke Coenen, Marlies Blom, Piet Stinissen, Veerle Somers.

Journal of Autoimmunity 2011 Feb; 36(1):33.

Application: IHC-P, Human, Human synovial tissues

Pathway

- [Cell cycle](#)
- [DNA replication](#)

Disease

- [Genetic Predisposition to Disease](#)
- [Ovarian Neoplasms](#)