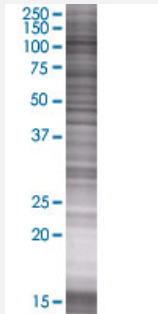


MATN2 293T Cell Transient Overexpression Lysate(Denatured)

Catalog # H00004147-T01

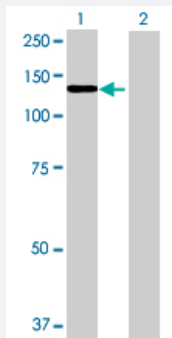
Size 100 uL

Applications



SDS-PAGE Gel

MATN2 transfected lysate.



Western Blot

Lane 1: MATN2 transfected lysate (103.18 KDa)

Lane 2: Non-transfected lysate.

Specification

Transfected Cell Line 293T

Plasmid pCMV-MATN2 full-length

Host Human

Theoretical MW (kDa) 103.18

Quality Control Testing Transient overexpression cell lysate was tested with Anti-MATN2 antibody ([H00004147-B01](#)) by Western Blots.
 SDS-PAGE Gel
 MATN2 transfected lysate.
 Western Blot
 Lane 1: MATN2 transfected lysate (103.18 KDa)
 Lane 2: Non-transfected lysate.

Storage Buffer

1X Sample Buffer (50 mM Tris-HCl, 2% SDS, 10% glycerol, 300 mM 2-mercaptoethanol, 0.01% Bromophenol blue)

Storage Instruction

Store at -80°C. Aliquot to avoid repeated freezing and thawing.

Applications

- Western Blot

Gene Info — MATN2

Entrez GeneID[4147](#)**GeneBank Accession#**[NM_030583.2](#)**Protein Accession#**[NP_085072.2](#)**Gene Name**

MATN2

Gene Alias

-

Gene Description

matrilin 2

Omim ID[602108](#)**Gene Ontology**[Hyperlink](#)**Gene Summary**

This gene encodes a member of the von Willebrand factor A domain containing protein family. This family of proteins is thought to be involved in the formation of filamentous networks in the extracellular matrices of various tissues. This protein contains five von Willebrand factor A domains. The specific function of this gene has not yet been determined. Two transcript variants encoding different isoforms have been found for this gene. [provided by RefSeq]

Other Designations

-

Disease

- [Cardiovascular Diseases](#)
- [Diabetes Mellitus](#)
- [Edema](#)
- [Genetic Predisposition to Disease](#)

- [Thyroid Neoplasms](#)