

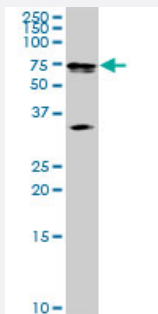
MaxPab®

MAK purified MaxPab rabbit polyclonal antibody (D01P)

Catalog # H00004117-D01P

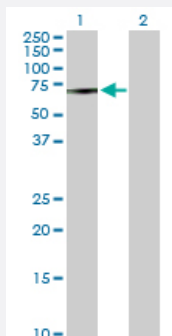
Size 100 ug

Applications



Western Blot (Tissue lysate)

MAK MaxPab rabbit polyclonal antibody. Western Blot analysis of MAK expression in mouse brain.



Western Blot (Transfected lysate)

Western Blot analysis of MAK expression in transfected 293T cell line ([H00004117-T01](#)) by MAK MaxPab polyclonal antibody.

Lane 1: MAK transfected lysate(52.60 KDa).

Lane 2: Non-transfected lysate.

Specification

Product Description

Rabbit polyclonal antibody raised against a full-length human MAK protein.

Immunogen

MAK (AAH39825.1, 1 a.a. ~ 457 a.a) full-length human protein.

Sequence

MNRYTTMRQLGDGTGYSVLMGKSNESEGELVAIKRMKRKFYSWDECMNLREVKSLKKLNHANVIK
LKEVIRENDHLYFIFEYMKENLYQLMKDRNKLFPESVIRNIMYQILQGLAFIHKHGFFHRDMKPENLL
CMGPELVKIADDFGLARELRSQPPYTDYVSTRWYRAPEVLLRSSVYSSPIDVWAVGSIMAELYMLR
PLFPGTSEVDEIFKICQVLGTPKKSDWPEGYQLASSMNFRRPQCVPINLKTLPNASNEAIQLMTEM
LNWDPPKKRPTASQALKHPYFQVGQVLGPSSNHLESKQSLNKLQPLESKPSLVEVEPKPLPDIID
QVVGQPQPKTSQQPLQIQQPPQNLSVQQPPKQQSQEKPPQTLFPSIVKNMPTKPNGTLSHKSGR
RRWGQTIFKSGDSWEELEDYDFGASHSKKPSMGVFKEKRKKDSPFRQQVKMAVISLSAHQFPT
L

Host	Rabbit
Reactivity	Human, Mouse
Quality Control Testing	Antibody reactive against mammalian transfected lysate.
Storage Buffer	In 1x PBS, pH 7.4
Storage Instruction	Store at -20°C or lower. Aliquot to avoid repeated freezing and thawing.

Applications

- Western Blot (Tissue lysate)

MAK MaxPab rabbit polyclonal antibody. Western Blot analysis of MAK expression in mouse brain.

[Protocol Download](#)

- Western Blot (Transfected lysate)

Western Blot analysis of MAK expression in transfected 293T cell line ([H00004117-T01](#)) by MAK MaxPab polyclonal antibody.

Lane 1: MAK transfected lysate(52.60 KDa).

Lane 2: Non-transfected lysate.

[Protocol Download](#)

Gene Info — MAK

Entrez GeneID	4117
GeneBank Accession#	BC039825.1
Protein Accession#	AAH39825.1
Gene Name	MAK
Gene Alias	dJ417M14.2
Gene Description	male germ cell-associated kinase
Omim ID	154235
Gene Ontology	Hyperlink

Gene Summary

The product of this gene is a serine/threonine protein kinase related to kinases involved in cell cycle regulation. It is expressed almost exclusively in the testis, primarily in germ cells. Studies of the mouse and rat homologs have localized the kinase to the chromosomes during meiosis in spermatogenesis, specifically to the synaptonemal complex that exists while homologous chromosomes are paired. There is, however, a study of the mouse homolog that has identified high levels of expression in developing sensory epithelia so its function may be more generalized. [provided by RefSeq]

Other Designations

OTTHUMP00000016025|serine/threonine protein kinase MAK