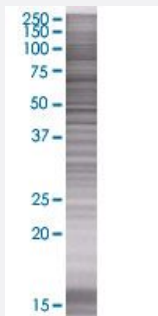


MAGOH 293T Cell Transient Overexpression Lysate(Denatured)

Catalog # H00004116-T01

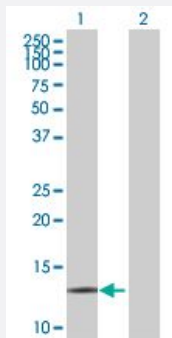
Size 100 uL

Applications



SDS-PAGE Gel

MAGOH transfected lysate.



Western Blot

Lane 1: MAGOH transfected lysate (16.17 KDa)

Lane 2: Non-transfected lysate.

Specification

Transfected Cell Line 293T

Plasmid pCMV-MAGOH full-length

Host Human

Theoretical MW (kDa) 16.17

Quality Control Testing Transient overexpression cell lysate was tested with Anti-MAGOH antibody ([H00004116-B01](#)) by Western Blots.

SDS-PAGE Gel
MAGOH transfected lysate.

Western Blot
Lane 1: MAGOH transfected lysate (16.17 KDa)
Lane 2: Non-transfected lysate.

Storage Buffer

1X Sample Buffer (50 mM Tris-HCl, 2% SDS, 10% glycerol, 300 mM 2-mercaptoethanol, 0.01% Bromophenol blue)

Storage Instruction

Store at -80°C. Aliquot to avoid repeated freezing and thawing.

Applications

- Western Blot

Gene Info — MAGOH

Entrez GeneID[4116](#)**GeneBank Accession#**[NM_002370.2](#)**Protein Accession#**[NP_002361.1](#)**Gene Name**

MAGOH

Gene Alias

MAGOHA

Gene Description

mago-nashi homolog, proliferation-associated (Drosophila)

Omim ID[602603](#)**Gene Ontology**[Hyperlink](#)**Gene Summary**

Drosophila that have mutations in their mago nashi (grandchildless) gene produce progeny with defects in germline assembly and germline development. This gene encodes the mammalian mago nashi homolog. In mammals, mRNA expression is not limited to the germ plasm, but is expressed ubiquitously in adult tissues and can be induced by serum stimulation of quiescent fibroblasts. [provided by RefSeq]

Other Designations

OTTHUMP00000010485|mago-nashi homolog