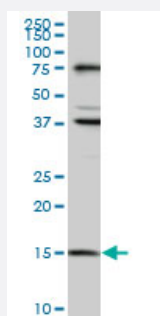


MAGOH monoclonal antibody (M01), clone 6E11

Catalog # H00004116-M01

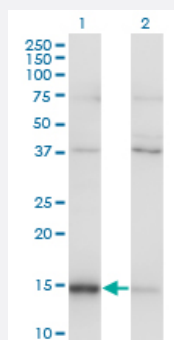
Size 100 ug

Applications



Western Blot (Cell lysate)

MAGOH monoclonal antibody (M01), clone 6E11. Western Blot analysis of MAGOH expression in HeLa (Cat # L013V1).

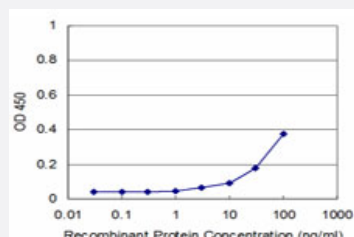


Western Blot (Transfected lysate)

Western Blot analysis of MAGOH expression in transfected 293T cell line by MAGOH monoclonal antibody (M01), clone 6E11.

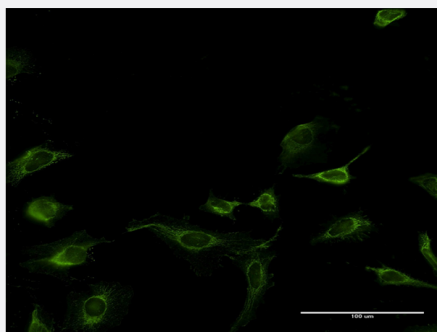
Lane 1: MAGOH transfected lysate(17.2 KDa).

Lane 2: Non-transfected lysate.



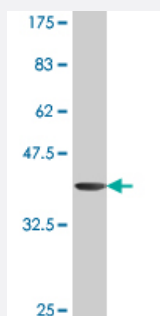
Sandwich ELISA (Recombinant protein)

Detection limit for recombinant GST tagged MAGOH is approximately 3ng/ml as a capture antibody.



Immunofluorescence

Immunofluorescence of monoclonal antibody to MAGOH on HeLa cell .
[antibody concentration 10 ug/ml]



Western Blot detection against Immunogen (37.84 KDa) .

Specification

Product Description	Mouse monoclonal antibody raised against a partial recombinant MAGOH.
Immunogen	MAGOH (NP_002361, 1 a.a. ~ 110 a.a) partial recombinant protein with GST tag. MW of the GST tag alone is 26 KDa.
Sequence	MESDFYLRYVGHKGKFGHEFLEFEFRPDGKLRVYANNSSNYKNDVMIRKEAYVHKSVMEELKRIIDD SEITKEDDALWPPPDRVGRQLEIVIGDEHISFTTSKIGSLIDV
Host	Mouse
Reactivity	Human
Isotype	IgG1 Kappa
Quality Control Testing	Antibody Reactive Against Recombinant Protein. Western Blot detection against Immunogen (37.84 KDa) .
Storage Buffer	In 1x PBS, pH 7.4
Storage Instruction	Store at -20°C or lower. Aliquot to avoid repeated freezing and thawing.

Applications

- Western Blot (Cell lysate)

MAGOH monoclonal antibody (M01), clone 6E11. Western Blot analysis of MAGOH expression in HeLa (Cat # L013V1).

[Protocol Download](#)

- Western Blot (Transfected lysate)

Western Blot analysis of MAGOH expression in transfected 293T cell line by MAGOH monoclonal antibody (M01), clone 6E11.

Lane 1: MAGOH transfected lysate(17.2 KDa).

Lane 2: Non-transfected lysate.

[Protocol Download](#)

- Western Blot (Recombinant protein)

[Protocol Download](#)

- Sandwich ELISA (Recombinant protein)

Detection limit for recombinant GST tagged MAGOH is approximately 3ng/ml as a capture antibody.

[Protocol Download](#)

- ELISA

- Immunofluorescence

Immunofluorescence of monoclonal antibody to MAGOH on HeLa cell . [antibody concentration 10 ug/ml]

Gene Info — MAGOH

Entrez GeneID [4116](#)

GeneBank Accession# [NM_002370](#)

Protein Accession# [NP_002361](#)

Gene Name MAGOH

Gene Alias MAGOHA

Gene Description mago-nashi homolog, proliferation-associated (Drosophila)

Omim ID [602603](#)

Gene Ontology [Hyperlink](#)

Gene Summary

Drosophila that have mutations in their mago nashi (grandchildless) gene produce progeny with defects in germplasm assembly and germline development. This gene encodes the mammalian mago nashi homolog. In mammals, mRNA expression is not limited to the germ plasm, but is expressed ubiquitously in adult tissues and can be induced by serum stimulation of quiescent fibroblasts. [provided by RefSeq]

Other Designations

OTTHUMP00000010485|mago-nashi homolog