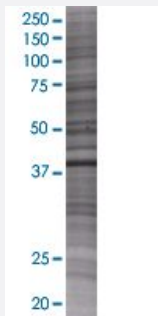


# MAGEB2 293T Cell Transient Overexpression Lysate(Denatured)

Catalog # H00004113-T01

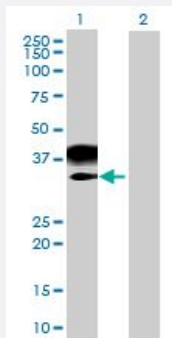
Size 100 uL

## Applications



### SDS-PAGE Gel

MAGEB2 transfected lysate.



### Western Blot

Lane 1: MAGEB2 transfected lysate ( 35.3 KDa)

Lane 2: Non-transfected lysate.

## Specification

Transfected Cell Line	293T
Plasmid	pCMV-MAGEB2 full-length
Host	Human
Theoretical MW (kDa)	35.3
Interspecies Antigen Sequence	Mouse (56); Rat (53)

## Quality Control Testing

Transient overexpression cell lysate was tested with Anti-MAGEB2 antibody ([H00004113-B01](#)) by Western Blots.  
SDS-PAGE Gel  
MAGEB2 transfected lysate.  
Western Blot  
Lane 1: MAGEB2 transfected lysate ( 35.3 KDa)  
Lane 2: Non-transfected lysate.

## Storage Buffer

1X Sample Buffer (50 mM Tris-HCl, 2% SDS, 10% glycerol, 300 mM 2-mercaptoethanol, 0.01% Bromophenol blue)

## Storage Instruction

Store at -80°C. Aliquot to avoid repeated freezing and thawing.

## Applications

- Western Blot

## Gene Info — MAGEB2

## Entrez GeneID

[4113](#)

## GeneBank Accession#

[NM\\_002364](#)

## Protein Accession#

[NP\\_002355.1](#)

## Gene Name

MAGEB2

## Gene Alias

DAM6, MAGE-XP-2, MGC26438

## Gene Description

melanoma antigen family B, 2

## Omim ID

[300098](#)

## Gene Ontology

[Hyperlink](#)

## Gene Summary

This gene is a member of the MAGEB gene family. The members of this family have their entire coding sequences located in the last exon, and the encoded proteins show 50 to 68% sequence identity to each other. The promoters and first exons of the MAGEB genes show considerable variability, suggesting that the existence of this gene family enables the same function to be expressed under different transcriptional controls. This gene is localized in the DSS (dosage-sensitive sex reversal) critical region. It is expressed in testis and placenta, and in a significant fraction of tumors of various histological types. The MAGEB genes are clustered on chromosome Xp22-p21. [provided by RefSeq]

## Other Designations

DSS/AHC critical interval MAGE superfamily 6|OTTHUMP00000023098|melanoma-associated antigen B2