

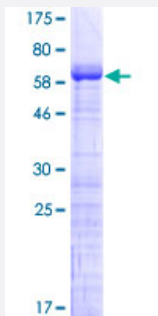
Full-Length

MAGEB2 (Human) Recombinant Protein (P01)

Catalog # H00004113-P01

Size 25 ug, 10 ug

Applications



Specification

Product Description

Human MAGEB2 full-length ORF (NP_002355.1, 1 a.a. - 319 a.a.) recombinant protein with GST-tag at N-terminal.

Sequence

MPRGQKSKLRAREKRRKARDETRGLNVPQVTEAAAAEAPCCSSSVSGGAASSSPAAGIPQKPQ
RAPTTAAAAAAGVSSTKSKKGAKSHQGEKNASSSQASTSTKSPSEDPLTRKSGSLVQFLLYKYKI
KKSVTKGEMLKIVGKRFRHFPEILKKASEGLSVVFGLELNKVNPNNGHTYTFIDKVDLTDEESLLS
SWDFPRRKLLMPLLGVIFLNGNSATEEEWEFLNMLGVYDGEHHSVFGEPPWKLITKDLVQEKYLE
YKQVPSSDPPRFQFLWGPARYAETSKMKVLEFLAKVNGTTPCAFPTHYEEALKDEEKAGV

Host

Wheat Germ (in vitro)

Theoretical MW (kDa)

61.7

Interspecies Antigen Sequence

Mouse (56); Rat (53)

Preparation Method

[in vitro wheat germ expression system](#)

Purification

Glutathione Sepharose 4 Fast Flow

Quality Control Testing

12.5% SDS-PAGE Stained with Coomassie Blue.

Storage Buffer

50 mM Tris-HCl, 10 mM reduced Glutathione, pH=8.0 in the elution buffer.

Storage Instruction

Store at -80°C. Aliquot to avoid repeated freezing and thawing.

Note

Best use within three months from the date of receipt of this protein.

Applications

- Enzyme-linked Immunoabsorbent Assay
- Western Blot (Recombinant protein)
- Antibody Production
- Protein Array

Gene Info — MAGEB2

Entrez GeneID[4113](#)**GeneBank Accession#**[NM_002364.3](#)**Protein Accession#**[NP_002355.1](#)**Gene Name**

MAGEB2

Gene Alias

DAM6, MAGE-XP-2, MGC26438

Gene Description

melanoma antigen family B, 2

Omim ID[300098](#)**Gene Ontology**[Hyperlink](#)**Gene Summary**

This gene is a member of the MAGEB gene family. The members of this family have their entire coding sequences located in the last exon, and the encoded proteins show 50 to 68% sequence identity to each other. The promoters and first exons of the MAGEB genes show considerable variability, suggesting that the existence of this gene family enables the same function to be expressed under different transcriptional controls. This gene is localized in the DSS (dosage-sensitive sex reversal) critical region. It is expressed in testis and placenta, and in a significant fraction of tumors of various histological types. The MAGEB genes are clustered on chromosome Xp22-p21. [provided by RefSeq]

Other Designations

DSS/AHC critical interval MAGE superfamily 6|OTTHUMP00000023098|melanoma-associated antigen B2