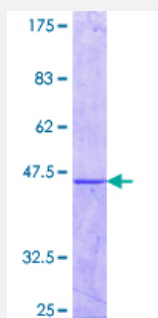


MAGEB1 (Human) Recombinant Protein (Q01)

Catalog # H00004112-Q01

Size 25 ug, 10 ug

Applications



Specification

Product Description	Human MAGEB1 partial ORF (NP_803134.1, 86 a.a. - 195 a.a.) recombinant protein with GST-tag at N-terminal.
Sequence	QGEENASFSQATTSTESSVKDPVAWEAGMLMHFILRKYKMREPIMKADMLKVVDEKYKDHFEIL NGASRRLELVFGLDLKEDNPSGHTYTLVSKLNLTDGNLSNDWDF
Host	Wheat Germ (in vitro)
Theoretical MW (kDa)	37.84
Interspecies Antigen Sequence	Mouse (51)
Preparation Method	in vitro wheat germ expression system
Purification	Glutathione Sepharose 4 Fast Flow
Quality Control Testing	12.5% SDS-PAGE Stained with Coomassie Blue.
Storage Buffer	50 mM Tris-HCl, 10 mM reduced Glutathione, pH=8.0 in the elution buffer.
Storage Instruction	Store at -80°C. Aliquot to avoid repeated freezing and thawing.
Note	Best use within three months from the date of receipt of this protein.

Applications

- Enzyme-linked Immunoabsorbent Assay
- Western Blot (Recombinant protein)
- Antibody Production
- Protein Array

Gene Info — MAGEB1

Entrez GeneID [4112](#)

GeneBank Accession# [NM_177415](#)

Protein Accession# [NP_803134.1](#)

Gene Name MAGEB1

Gene Alias DAM10, MAGE-Xp, MAGEL1, MGC9322

Gene Description melanoma antigen family B, 1

Omim ID [300097](#)

Gene Ontology [Hyperlink](#)

Gene Summary

This gene is a member of the MAGEB gene family. The members of this family have their entire coding sequences located in the last exon, and the encoded proteins show 50 to 68% sequence identity to each other. The promoters and first exons of the MAGEB genes show considerable variability, suggesting that the existence of this gene family enables the same function to be expressed under different transcriptional controls. This gene is localized in the DSS (dosage-sensitive sex reversal) critical region, and expressed in testis and in a significant fraction of tumors of various histological types. This gene and other MAGEB members are clustered on chromosome Xp22-p21. Multiple alternatively spliced transcript variants encoding the same protein have been found for this gene, however, the full length nature of some variants has not been defined. [provided by RefSeq]

Other Designations DSS/AHC critical interval MAGE superfamily 10|OTTHUMP00000023101