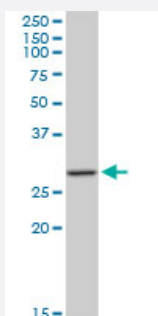


# MAGEA12 monoclonal antibody (M01), clone 3A10

Catalog # H00004111-M01

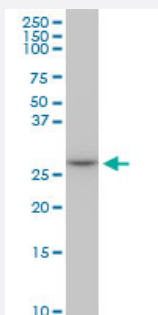
Size 100 ug

## Applications



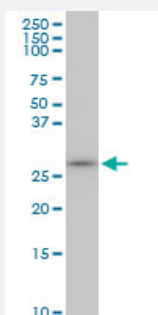
### Western Blot (Tissue lysate)

MAGEA12 monoclonal antibody (M01), clone 3A10. Western Blot analysis of MAGEA12 expression in human liver.



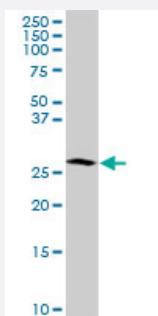
### Western Blot (Cell lysate)

MAGEA12 monoclonal antibody (M01), clone 3A10. Western Blot analysis of MAGEA12 expression in Raw 264.7 (Cat # L024V1).



### Western Blot (Cell lysate)

MAGEA12 monoclonal antibody (M01), clone 3A10. Western Blot analysis of MAGEA12 expression in NIH/3T3 (Cat # L018V1).

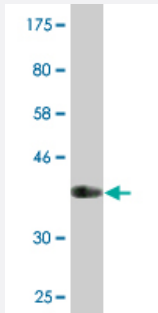
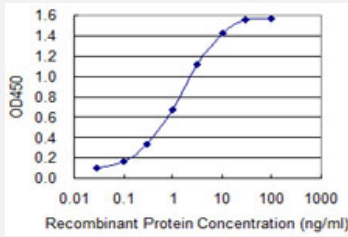


### Western Blot (Cell lysate)

MAGEA12 monoclonal antibody (M01), clone 3A10. Western Blot analysis of MAGEA12 expression in Jurkat (Cat # L017V1).

## Sandwich ELISA (Recombinant protein)

Detection limit for recombinant GST tagged MAGEA12 is 0.03 ng/ml as a capture antibody.



Western Blot detection against Immunogen (36.63 KDa) .

## Specification

<b>Product Description</b>	Mouse monoclonal antibody raised against a partial recombinant MAGEA12.
<b>Immunogen</b>	MAGEA12 (NP_005358, 70 a.a. ~ 168 a.a) partial recombinant protein with GST tag. MW of the GST tag alone is 26 KDa.
<b>Sequence</b>	TLPTTINYTLWSQSDEGSSNEEQEGPSTFPDLETSFQVALSRKMAELVHFLLLKYRAREPFTKAE MLGSVIRNFQDFFPVIFSKASEYLQLVFGIEVVE
<b>Host</b>	Mouse
<b>Reactivity</b>	Human, Mouse
<b>Isotype</b>	IgG2a Kappa
<b>Quality Control Testing</b>	Antibody Reactive Against Recombinant Protein. Western Blot detection against Immunogen (36.63 KDa) .
<b>Storage Buffer</b>	In 1x PBS, pH 7.4
<b>Storage Instruction</b>	Store at -20°C or lower. Aliquot to avoid repeated freezing and thawing.

## Applications

- Western Blot (Tissue lysate)

MAGEA12 monoclonal antibody (M01), clone 3A10. Western Blot analysis of MAGEA12 expression in human liver.

[Protocol Download](#)

- Western Blot (Cell lysate)

MAGEA12 monoclonal antibody (M01), clone 3A10. Western Blot analysis of MAGEA12 expression in Raw 264.7(Cat # L024V1 ).

[Protocol Download](#)

- Western Blot (Cell lysate)

MAGEA12 monoclonal antibody (M01), clone 3A10. Western Blot analysis of MAGEA12 expression in NIH/3T3(Cat # L018V1 ).

[Protocol Download](#)

- Western Blot (Cell lysate)

MAGEA12 monoclonal antibody (M01), clone 3A10. Western Blot analysis of MAGEA12 expression in Jurkat ( Cat # L017V1 ).

[Protocol Download](#)

- Western Blot (Recombinant protein)

[Protocol Download](#)

- Sandwich ELISA (Recombinant protein)

Detection limit for recombinant GST tagged MAGEA12 is 0.03 ng/ml as a capture antibody.

[Protocol Download](#)

- ELISA

## Gene Info — MAGEA12

Entrez GeneID	<a href="#">4111</a>
GeneBank Accession#	<a href="#">NM_005367</a>
Protein Accession#	<a href="#">NP_005358</a>
Gene Name	MAGEA12
Gene Alias	MAGE12

Gene Description	melanoma antigen family A, 12
Omim ID	<a href="#">300177</a>
Gene Ontology	<a href="#">Hyperlink</a>
Gene Summary	<p>This gene is a member of the MAGEA gene family. The members of this family encode proteins with 50 to 80% sequence identity to each other. The promoters and first exons of the MAGEA genes show considerable variability, suggesting that the existence of this gene family enables the same function to be expressed under different transcriptional controls. The MAGEA genes are clustered at chromosomal location Xq28. They have been implicated in some hereditary disorders, such as dyskeratosis congenita. [provided by RefSeq]</p>
Other Designations	OTTHUMP00000024231