

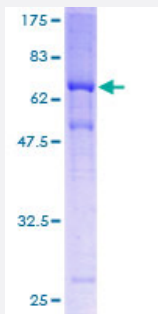
Full-Length

MAGEA11 (Human) Recombinant Protein (P01)

Catalog # H00004110-P01

Size 25 ug, 10 ug

Applications



Specification

Product Description

Human MAGEA11 full-length ORF (AAH04479.1, 1 a.a. - 319 a.a.) recombinant protein with GST-tag at N-terminal.

Sequence

MPLEQRSQHCKPEEGLQAQEEDLGLVGAQALQAEEQEAAFFSSTLNVGTLEELPAAESPSPQ
SPQEESFSPTAMDAIFGSLSDGSGSKEKEGPSTSPDLIDPESFSQDILHDKIIDLVHLLLRKYRVK
GLITKAEMLGSVIKNYEDYFPEIFREASVCMQLLFGIDVKEVDPTSHSYVLVTSNLSDGIQCNEQ
SMPKSGLLIIVLGVIFMEGNCEPEEVMWEVLSIMGVYAGREHFLFGEPKRLTQNWVQEKYLVYRQ
VPGTDPACYEFLWGPRAHAETSKMKVLEYANANGRDPTSYPSTLYEDALREEGEGV

Host

Wheat Germ (in vitro)

Theoretical MW (kDa)

60.83

Interspecies Antigen Sequence

Mouse (41)

Preparation Method

[in vitro wheat germ expression system](#)

Purification

Glutathione Sepharose 4 Fast Flow

Quality Control Testing

12.5% SDS-PAGE Stained with Coomassie Blue.

Storage Buffer

50 mM Tris-HCl, 10 mM reduced Glutathione, pH=8.0 in the elution buffer.

Storage Instruction

Store at -80°C. Aliquot to avoid repeated freezing and thawing.

Note

Best use within three months from the date of receipt of this protein.

Applications

- Enzyme-linked Immunoabsorbent Assay
- Western Blot (Recombinant protein)
- Antibody Production
- Protein Array

Gene Info — MAGEA11

Entrez GeneID[4110](#)**GeneBank Accession#**[BC004479.1](#)**Protein Accession#**[AAH04479.1](#)**Gene Name**

MAGEA11

Gene Alias

MAGE-11, MAGE11, MAGEA-11, MGC10511

Gene Description

melanoma antigen family A, 11

Omim ID[300344](#)**Gene Ontology**[Hyperlink](#)**Gene Summary**

This gene is a member of the MAGEA gene family. The members of this family encode proteins with 50 to 80% sequence identity to each other. The promoters and first exons of the MAGEA gene show considerable variability, suggesting that the existence of this gene family enables the same function to be expressed under different transcriptional controls. The MAGEA genes are clustered at chromosomal location Xq28. They have been implicated in some hereditary disorders, such as dyskeratosis congenita. Two transcript variants encoding different isoforms have been found for this gene. [provided by RefSeq]

Other Designations

MAGE-11 antigen|OTTHUMP00000024217|melanoma-associated antigen 11