

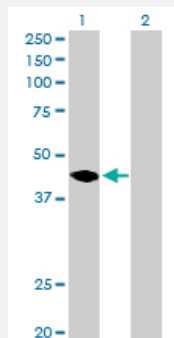
MaxPab®

# MAGEA11 purified MaxPab rabbit polyclonal antibody (D01P)

Catalog # H00004110-D01P

Size 100 ug

## Applications



### Western Blot (Transfected lysate)

Western Blot analysis of MAGEA11 expression in transfected 293T cell line by MAGEA11 MaxPab rabbit polyclonal antibody.

Lane 1: MAGEA11 transfected lysate(35.50 KDa).

Lane 2: Non-transfected lysate.

## Specification

Product Description	Rabbit polyclonal antibody raised against a full-length human MAGEA11 protein.
Immunogen	MAGEA11 (ENSP00000359445, 1 a.a. ~ 319 a.a) full-length human protein.
Sequence	MPLEQRSQHCKPEEGLQAQEEDLGLVGAQALQAEEQEAAFFSSTLNVGTLEELPAAESPSPQ SPQEESFSPTAMDAIFGSLSDGSGSQEKEGPSTSPDLIDPESFSQDILHDKIIDLVHLLLRKYRVK GLITKAEMLGSVIKNYEDYFPEIFREASVCMQLLFGIDVKEVDPTSHSYVLVTSNLSDGIQCNEQ SMPKSGLLIIVLGVIFMEGNCIPEEVMWEVLSIMGVYAGREHFLFGPEPKRLLTQNWVQEKYLVYRQ VPGTDPACYEFLWGPRAHAETSKMKVLEYIANANGRDPTSYPSLYEDALREEGEGV
Host	Rabbit
Reactivity	Human
Interspecies Antigen Sequence	Mouse (41)
Quality Control Testing	Antibody reactive against mammalian transfected lysate.
Storage Buffer	In 1x PBS, pH 7.4
Storage Instruction	Store at -20°C or lower. Aliquot to avoid repeated freezing and thawing.

## Applications

- Western Blot (Transfected lysate)

Western Blot analysis of MAGEA11 expression in transfected 293T cell line by MAGEA11 MaxPab rabbit polyclonal antibody.

Lane 1: MAGEA11 transfected lysate(35.50 KDa).

Lane 2: Non-transfected lysate.

[Protocol Download](#)

## Gene Info — MAGEA11

Entrez GeneID [4110](#)

GeneBank Accession# [ENST00000370417](#)

Protein Accession# [ENSP00000359445](#)

Gene Name MAGEA11

Gene Alias MAGE-11, MAGE11, MAGEA-11, MGC10511

Gene Description melanoma antigen family A, 11

Omim ID [300344](#)

Gene Ontology [Hyperlink](#)

**Gene Summary** This gene is a member of the MAGEA gene family. The members of this family encode proteins with 50 to 80% sequence identity to each other. The promoters and first exons of the MAGEA genes show considerable variability, suggesting that the existence of this gene family enables the same function to be expressed under different transcriptional controls. The MAGEA genes are clustered at chromosomal location Xq28. They have been implicated in some hereditary disorders, such as dyskeratosis congenita. Two transcript variants encoding different isoforms have been found for this gene. [provided by RefSeq]

**Other Designations** MAGE-11 antigen|OTTHUMP00000024217|melanoma-associated antigen 11