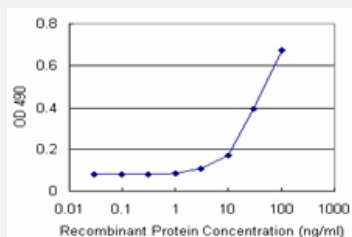


MAGEA9 (Human) Matched Antibody Pair

Catalog # H00004108-AP21

Size 1 Set

Applications



Sandwich ELISA detection sensitivity ranging from 3 ng/ml to 100 ng/ml.

Specification

Product Description

This antibody pair set comes with a matched antibody pair to detect and quantify the protein level of human MAGEA9.

Reactivity

Human

Quality Control Testing

Standard curve using recombinant protein (H00004108-P01) as an analyte.
Sandwich ELISA detection sensitivity ranging from 3 ng/ml to 100 ng/ml.

Supplied Product

Antibody pair set content:
1. Capture antibody: rabbit MaxPab® affinity purified polyclonal anti-MAGEA9 (100 ug)
2. Detection antibody: mouse purified polyclonal anti-MAGEA9 (20 ug)
*Reagents are sufficient for at least 1-2 x 96 well plates using recommended protocols.

Storage Instruction

Store reagents of the antibody pair set at -20°C or lower. Please aliquot to avoid repeated freeze thaw cycle. Reagents should be returned to -20°C storage immediately after use.

Applications

- ELISA Pair (Recombinant protein)

[Protocol Download](#)

Gene Info — MAGEA9

Entrez GeneID [4108](#)**Gene Name** MAGEA9**Gene Alias** MAGE9, MGC8421**Gene Description** melanoma antigen family A, 9**Omim ID** [300342](#)**Gene Ontology** [Hyperlink](#)

Gene Summary This gene is a member of the MAGEA gene family. The members of this family encode proteins with 50 to 80% sequence identity to each other. The promoters and first exons of the MAGEA genes show considerable variability, suggesting that the existence of this gene family enables the same function to be expressed under different transcriptional controls. The MAGEA genes are clustered at chromosomal location Xq28. They have been implicated in some hereditary disorders, such as dyskeratosis congenita. [provided by RefSeq]

Other Designations MAGE-9 antigen|OTTHUMP00000024214|melanoma-associated antigen 9