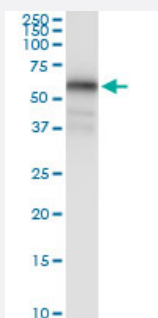


MAGEA8 (Human) IP-WB Antibody Pair

Catalog # H00004107-PW1

Size 1 Set

Applications



Immunoprecipitation of MAGEA8 transfected lysate using rabbit polyclonal anti-MAGEA8 and Protein A Magnetic Bead ([U0007](#)), and immunoblotted with mouse polyclonal anti-MAGEA8.

Specification

| | |
|--------------------------------|--|
| Product Description | This IP-WB antibody pair set comes with one antibody for immunoprecipitation and another to detect the precipitated protein in western blot. |
| Reactivity | Human |
| Quality Control Testing | Immunoprecipitation-Western Blot (IP-WB) Immunoprecipitation of MAGEA8 transfected lysate using rabbit polyclonal anti-MAGEA8 and Protein A Magnetic Bead (U0007), and immunoblotted with mouse polyclonal anti-MAGEA8. |
| Supplied Product | Antibody pair set content: 1. Antibody pair for IP: rabbit polyclonal anti-MAGEA8 (300 ul) 2. Antibody pair for WB: mouse polyclonal anti-MAGEA8 (50 ul) |
| Storage Instruction | Store reagents of the antibody pair set at -20°C or lower. Please aliquot to avoid repeated freeze thaw cycle. Reagents should be returned to -20°C storage immediately after use. |

Applications

- Immunoprecipitation-Western Blot

[Protocol Download](#)

Gene Info — MAGEA8

| | |
|--------------------|--|
| Entrez GeneID | 4107 |
| Gene Name | MAGEA8 |
| Gene Alias | MAGE8, MGC2182 |
| Gene Description | melanoma antigen family A, 8 |
| Omim ID | 300341 |
| Gene Ontology | Hyperlink |
| Gene Summary | <p>This gene is a member of the MAGEA gene family. The members of this family encode proteins with 50 to 80% sequence identity to each other. The promoters and first exons of the MAGEA genes show considerable variability, suggesting that the existence of this gene family enables the same function to be expressed under different transcriptional controls. The MAGEA genes are clustered at chromosomal location Xq28. They have been implicated in some hereditary disorders, such as dyskeratosis congenita. [provided by RefSeq]</p> |
| Other Designations | MAGE-8 antigen OTTHUMP00000024218 |