

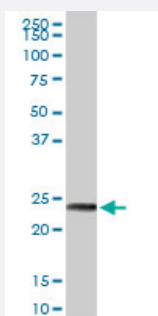
MaxPab®

MAGEA8 MaxPab rabbit polyclonal antibody (D01)

Catalog # H00004107-D01

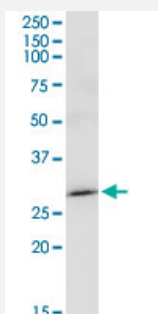
Size 100 uL

Applications



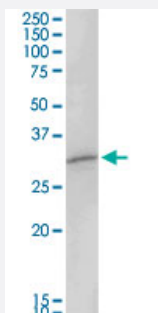
Western Blot (Tissue lysate)

MAGEA8 MaxPab rabbit polyclonal antibody. Western Blot analysis of MAGEA8 expression in human liver.



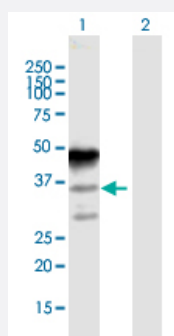
Western Blot (Tissue lysate)

MAGEA8 MaxPab rabbit polyclonal antibody. Western Blot analysis of MAGEA8 expression in human kidney.



Western Blot (Tissue lysate)

MAGEA8 MaxPab rabbit polyclonal antibody. Western Blot analysis of MAGEA8 expression in mouse spleen.

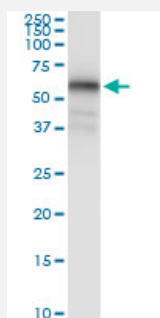


Western Blot (Transfected lysate)

Western Blot analysis of MAGEA8 expression in transfected 293T cell line ([H00004107-T01](#)) by MAGEA8 MaxPab polyclonal antibody.

Lane 1: MAGEA8 transfected lysate(35.20 KDa).

Lane 2: Non-transfected lysate.



Immunoprecipitation

Immunoprecipitation of MAGEA8 transfected lysate using anti-MAGEA8 MaxPab rabbit polyclonal antibody and Protein A Magnetic Bead, and immunoblotted with MAGEA8 MaxPab mouse polyclonal antibody (B01) ([H00004107-B01](#)).

Specification

Product Description	Rabbit polyclonal antibody raised against a full-length human MAGEA8 protein.
Immunogen	MAGEA8 (NP_005355.2, 1 a.a. ~ 318 a.a) full-length human protein.
Sequence	MLLGQKSQRYKAEEGLQAQGEAPGLMDVQIPTAEEQKAASSSSTLIMGTLEEVTDGSPSPPPQS PEGASSSLTVTDSTLWSQSDEGSSSNEEEGPSTSPDPAHLESFREALDEKVAELVRFLLRKYQI KEPVTKAEMLESVIKNYKNHFPDIFSKASECMQVIFGIDVKEVDPAGHSYILVTCLGLSYDGLLGDD QSTPKTGLLIIVLGMILMEGSRAPEEAWEALSVMGLYDGREHSVYWKLRKLLTQEWVQENYLEYR QAPGSDPVRYEFLWGPRLAETSYVKVLEHVVRVNARVRISYPSLHEEALGEEKGV
Host	Rabbit
Reactivity	Human, Mouse
Quality Control Testing	Antibody reactive against mammalian transfected lysate.
Storage Buffer	No additive
Storage Instruction	Store at -20°C or lower. Aliquot to avoid repeated freezing and thawing.

Applications

● Western Blot (Tissue lysate)

MAGEA8 MaxPab rabbit polyclonal antibody. Western Blot analysis of MAGEA8 expression in human liver.

[Protocol Download](#)

● Western Blot (Tissue lysate)

MAGEA8 MaxPab rabbit polyclonal antibody. Western Blot analysis of MAGEA8 expression in human kidney.

[Protocol Download](#)

- Western Blot (Tissue lysate)

MAGEA8 MaxPab rabbit polyclonal antibody. Western Blot analysis of MAGEA8 expression in mouse spleen.

[Protocol Download](#)

- Western Blot (Transfected lysate)

Western Blot analysis of MAGEA8 expression in transfected 293T cell line ([H00004107-T01](#)) by MAGEA8 MaxPab polyclonal antibody.

Lane 1: MAGEA8 transfected lysate(35.20 KDa).

Lane 2: Non-transfected lysate.

[Protocol Download](#)

- Immunoprecipitation

Immunoprecipitation of MAGEA8 transfected lysate using anti-MAGEA8 MaxPab rabbit polyclonal antibody and Protein A Magnetic Bead, and immunoblotted with MAGEA8 MaxPab mouse polyclonal antibody (B01) ([H00004107-B01](#)).

[Protocol Download](#)

Gene Info — MAGEA8

Entrez GeneID [4107](#)

GeneBank Accession# [NM_005364](#)

Protein Accession# [NP_005355.2](#)

Gene Name MAGEA8

Gene Alias MAGE8, MGC2182

Gene Description melanoma antigen family A, 8

Omim ID [300341](#)

Gene Ontology [Hyperlink](#)

Gene Summary This gene is a member of the MAGEA gene family. The members of this family encode proteins with 50 to 80% sequence identity to each other. The promoters and first exons of the MAGEA genes show considerable variability, suggesting that the existence of this gene family enables the same function to be expressed under different transcriptional controls. The MAGEA genes are clustered at chromosomal location Xq28. They have been implicated in some hereditary disorders, such as dyskeratosis congenita. [provided by RefSeq]

Other Designations MAGE-8 antigen|OTTHUMP00000024218