

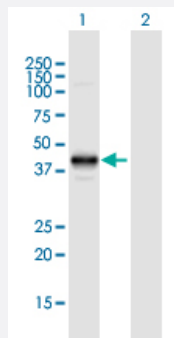
MaxPab®

MAGEA3 MaxPab mouse polyclonal antibody (B01)

Catalog # H00004102-B01

Size 50 uL

Applications



Western Blot (Transfected lysate)

Western Blot analysis of MAGEA3 expression in transfected 293T cell line ([H00004102-T01](#)) by MAGEA3 MaxPab polyclonal antibody.

Lane 1: MAGEA3 transfected lysate(34.54 KDa).

Lane 2: Non-transfected lysate.

Specification

Product Description	Mouse polyclonal antibody raised against a full-length human MAGEA3 protein.
Immunogen	MAGEA3 (NP_005353.1, 1 a.a. ~ 314 a.a) full-length human protein.
Sequence	MPLEQRSQHCKPEEGLEARGEALGLVGAQAPATEEQEPASSSSTLVEVTLGEVPAAESPDPPQ SPQGASSLPTTMNYPLWSQSYEDSSNQEEEGPSTFPDLESEFQAALSRKVAELVHFLLKYNAR EPVTKAEMLGSVVGNWQYFFPVIFSKASSSLQLVFGIELMEVDPIGHLIYFATCLGLSYDGLLDN QIMPKAGLLIIVLAIAREGDCAPEEKWEELSVLEVFEGRSDSILGDPKKLLTQHFVQENYLEYRQV PGSDPACYEFLWGPRLVETSYVKVLHMHVKISGGPHISYPPLHEWVLREGEE
Host	Mouse
Reactivity	Human
Quality Control Testing	Antibody reactive against mammalian transfected lysate.
Storage Buffer	No additive
Storage Instruction	Store at -20°C or lower. Aliquot to avoid repeated freezing and thawing.
Note	For IHC and IF applications, antibody purification with Protein A will be needed prior to use.

Applications

- Western Blot (Transfected lysate)

Western Blot analysis of MAGEA3 expression in transfected 293T cell line ([H00004102-T01](#)) by MAGEA3 MaxPab polyclonal antibody.

Lane 1: MAGEA3 transfected lysate(34.54 KDa).

Lane 2: Non-transfected lysate.

[Protocol Download](#)

Gene Info — MAGEA3

Entrez GeneID [4102](#)

GeneBank Accession# [NM_005362.3](#)

Protein Accession# [NP_005353.1](#)

Gene Name MAGEA3

Gene Alias HIP8, HYPD, MAGE3, MAGEA6, MGC14613

Gene Description melanoma antigen family A, 3

Omim ID [300174](#)

Gene Ontology [Hyperlink](#)

Gene Summary This gene is a member of the MAGEA gene family. The members of this family encode proteins with 50 to 80% sequence identity to each other. The promoters and first exons of the MAGEA genes show considerable variability, suggesting that the existence of this gene family enables the same function to be expressed under different transcriptional controls. The MAGEA genes are clustered at chromosomal location Xq28. They have been implicated in some hereditary disorders, such as dyskeratosis congenita. [provided by RefSeq]

Other Designations MAGE-3 antigen|OTTHUMP00000024220|antigen MZ2-D|melanoma-associated antigen 3