

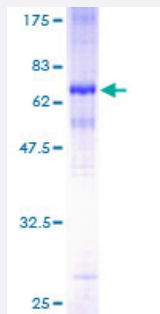
Full-Length

MAGEA2 (Human) Recombinant Protein (P01)

Catalog # H00004101-P01

Size 25 ug, 10 ug

Applications



Specification

Product Description

Human MAGEA2 full-length ORF (AAH63681, 1 a.a. - 314 a.a.) recombinant protein with GST-tag at N-terminal.

Sequence

MPLEQRSQHCKPEEGLEARGEALGLVGAQAPATEEQQTASSSSTLVEVTLGEVPAADSPSPPH
SPQGASSFSTTINYTLWRQSDEGSSNQEEEGPRMFPDLESEFQAAISRKMVELVHFLLLKYQARE
PVTKAEMLESVLRNCQDFFPVIFSKASEYLQLVFGIEVVEVVPISHLYILVTCLGLSYDGLLDGNQV
MPKTGLLIIVLAIAIEGDCAPEEKWEELSMLEVFEGREDSVFAHPRKLLMQDLVQENYLEYRQVP
GSDPACYEFLWGPRAIETSYVKVLHHTLKIGGEPHISYPPLHERALREGEE

Host

Wheat Germ (in vitro)

Theoretical MW (kDa)

60.28

Preparation Method

[in vitro wheat germ expression system](#)

Purification

Glutathione Sepharose 4 Fast Flow

Quality Control Testing

12.5% SDS-PAGE Stained with Coomassie Blue.

Storage Buffer

50 mM Tris-HCl, 10 mM reduced Glutathione, pH=8.0 in the elution buffer.

Storage Instruction

Store at -80°C. Aliquot to avoid repeated freezing and thawing.

Note

Best use within three months from the date of receipt of this protein.

Applications

- Enzyme-linked Immunoabsorbent Assay
- Western Blot (Recombinant protein)
- Antibody Production
- Protein Array

Gene Info — MAGEA2

Entrez GeneID [4101](#)

GeneBank Accession# [BC063681](#)

Protein Accession# [AAH63681](#)

Gene Name MAGEA2

Gene Alias MAGE2, MAGEA2A, MGC131923

Gene Description melanoma antigen family A, 2

Omim ID [300173](#)

Gene Ontology [Hyperlink](#)

Gene Summary This gene is a member of the MAGEA gene family. The members of this family encode proteins with 50 to 80% sequence identity to each other. The promoters and first exons of the MAGEA genes show considerable variability, suggesting that the existence of this gene family enables the same function to be expressed under different transcriptional controls. The MAGEA genes are clustered at chromosomal location Xq28. They have been implicated in some hereditary disorders, such as dyskeratosis congenita. This gene has two identical copies at different loci. Alternatively spliced transcript variants encoding the same protein have been identified for this gene. [provided by RefSeq]

Other Designations OTTHUMP00000024219|melanoma antigen 2|melanoma-associated antigen 2