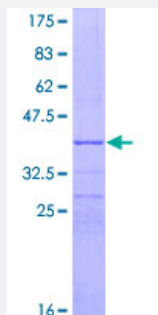


MAB21L1 (Human) Recombinant Protein (Q01)

Catalog # H00004081-Q01

Size 25 ug, 10 ug

Applications



Specification

Product Description	Human MAB21L1 partial ORF (NP_005575, 250 a.a. - 358 a.a.) recombinant protein with GST-tag at N-terminal.
Sequence	CLSILKTLRDRHLELPGQPLNNYHMKTLVSYECEKHPRESDWDESCLGDRNLNGILLQLISCLQCRR CPHYFLPNLDFQGKPHSALENAAKQWRLAREILTNPKSLEK
Host	Wheat Germ (in vitro)
Theoretical MW (kDa)	37.73
Interspecies Antigen Sequence	Mouse (100); Rat (100)
Preparation Method	in vitro wheat germ expression system
Purification	Glutathione Sepharose 4 Fast Flow
Quality Control Testing	12.5% SDS-PAGE Stained with Coomassie Blue.
Storage Buffer	50 mM Tris-HCl, 10 mM reduced Glutathione, pH=8.0 in the elution buffer.
Storage Instruction	Store at -80°C. Aliquot to avoid repeated freezing and thawing.
Note	Best use within three months from the date of receipt of this protein.

Applications

- Enzyme-linked Immunoabsorbent Assay
- Western Blot (Recombinant protein)
- Antibody Production
- Protein Array

Gene Info — MAB21L1

Entrez GeneID [4081](#)

GeneBank Accession# [NM_005584](#)

Protein Accession# [NP_005575](#)

Gene Name MAB21L1

Gene Alias CAGR1, FLJ10197, Nbla00126

Gene Description mab-21-like 1 (C. elegans)

Omim ID [601280](#)

Gene Ontology [Hyperlink](#)

Gene Summary This gene is similar to the MAB-21 cell fate-determining gene found in C. elegans. It may be involved in eye and cerebellum development, and it has been proposed that expansion of a trinucleotide repeat region in the 5' UTR may play a role in a variety of psychiatric disorders. [provided by RefSeq]

Other Designations OTTHUMP00000018238|mab-21-like protein 1

Disease

- [Bipolar Disorder](#)