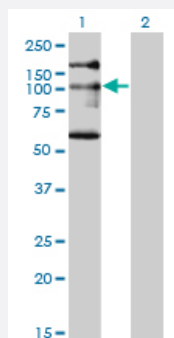


# NBR1 monoclonal antibody (M05A), clone 5C3

Catalog # H00004077-M05A

Size 200 uL

## Applications

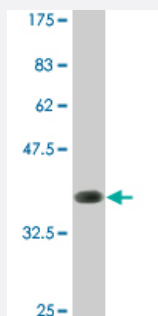


### Western Blot (Transfected lysate)

Western Blot analysis of NBR1 expression in transfected 293T cell line by NBR1 monoclonal antibody (M05A), clone 5C3.

Lane 1: NBR1 transfected lysate (107.4 KDa).

Lane 2: Non-transfected lysate.



Western Blot detection against Immunogen (36.19 KDa) .

## Specification

|                            |  |
|----------------------------|--|
| <b>Product Description</b> | Mouse monoclonal antibody raised against a partial recombinant NBR1.   |
| <b>Immunogen</b>           | NBR1 (NP_005890, 2 a.a. ~ 96 a.a) partial recombinant protein with GST tag. MW of the GST tag alone is 26 KDa. |
| <b>Sequence</b>            | EPQVTLNVTFKNEIQSFLVSDPENTTWADIEAMVKVSFDLNTIQIKYLDEENEEVSINSQGEYEEAL<br>KMAVKQGNQLQMQVHEGHHVVDEAPPPV            |
| <b>Host</b>                | Mouse  |
| <b>Reactivity</b>          | Human  |
| <b>Isotype</b>             | IgG2a Kappa  |

**Quality Control Testing**

Antibody Reactive Against Recombinant Protein.  
Western Blot detection against Immunogen (36.19 KDa) .

**Storage Buffer**

In ascites fluid

**Storage Instruction**

Store at -20°C or lower. Aliquot to avoid repeated freezing and thawing.

## Applications

- Western Blot (Transfected lysate)

Western Blot analysis of NBR1 expression in transfected 293T cell line by NBR1 monoclonal antibody (M05A), clone 5C3.

Lane 1: NBR1 transfected lysate(107.4 KDa).

Lane 2: Non-transfected lysate.

[Protocol Download](#)

- Western Blot (Recombinant protein)

[Protocol Download](#)

- ELISA

## Gene Info — NBR1

**Entrez GeneID**

[4077](#)

**GeneBank Accession#**

[NM\\_005899](#)

**Protein Accession#**

[NP\\_005890](#)

**Gene Name**

NBR1

**Gene Alias**

1A1-3B, KIAA0049, M17S2, MIG19

**Gene Description**

neighbor of BRCA1 gene 1

**Omim ID**

[166945](#)

**Gene Ontology**

[Hyperlink](#)

**Gene Summary**

The protein encoded by this gene was originally identified as an ovarian tumor antigen monitored in ovarian cancer. The encoded protein contains a B-box/coiled coil motif, which is present in many genes with transformation potential, but the function of this protein is unknown. This gene is located on a region of chromosome 17q21.1 that is in close proximity to tumor suppressor gene BRCA1. Three alternatively spliced variants encoding the same protein have been identified for this gene. [provided by RefSeq]

**Other Designations**

membrane component, chromosome 17, surface marker 2 (ovarian carcinoma antigen CA125)|migration-inducing protein 19

**Disease**

- [Tobacco Use Disorder](#)