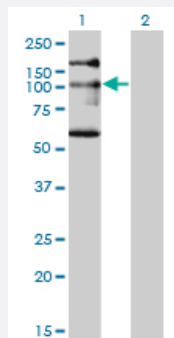


# NBR1 monoclonal antibody (M05), clone 5C3

Catalog # H00004077-M05

Size 100 ug

## Applications

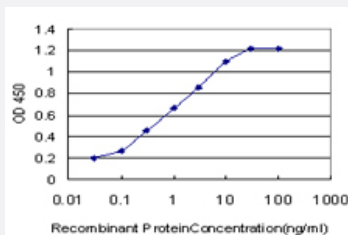


### Western Blot (Transfected lysate)

Western Blot analysis of NBR1 expression in transfected 293T cell line by NBR1 monoclonal antibody (M05), clone 5C3.

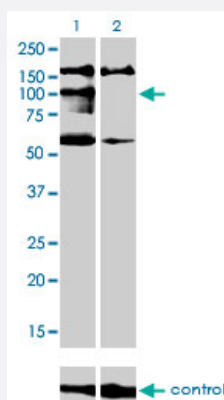
Lane 1: NBR1 transfected lysate (107.4 kDa).

Lane 2: Non-transfected lysate.



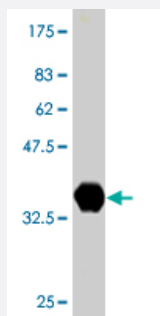
### Sandwich ELISA (Recombinant protein)

Detection limit for recombinant GST tagged NBR1 is approximately 0.03 ng/ml as a capture antibody.



### RNAi Knockdown (Antibody validated)

Western blot analysis of NBR1 over-expressed 293 cell line, cotransfected with NBR1 Validated Chimera RNAi (Cat # H00004077-R01V) (Lane 2) or non-transfected control (Lane 1). Blot probed with NBR1 monoclonal antibody (M05), clone 5C3 (Cat # H00004077-M05). GAPDH (36.1 kDa) used as specificity and loading control.



Western Blot detection against Immunogen (36.19 KDa) .

## Specification

<b>Product Description</b>	Mouse monoclonal antibody raised against a partial recombinant NBR1.
<b>Immunogen</b>	NBR1 (NP_005890, 2 a.a. ~ 96 a.a) partial recombinant protein with GST tag. MW of the GST tag alone is 26 KDa.
<b>Sequence</b>	EPQVTLNVTFKNEIQSFLVSDPENTTWADIEAMVKVSFDLNTIQIKYLDEENEEVSINSQGEYEEAL KMAVKQGNQLQMQRVHEGHHVVDEAPPPV
<b>Host</b>	Mouse
<b>Reactivity</b>	Human
<b>Isotype</b>	IgG2a Kappa
<b>Quality Control Testing</b>	Antibody Reactive Against Recombinant Protein. Western Blot detection against Immunogen (36.19 KDa) .
<b>Storage Buffer</b>	In 1x PBS, pH 7.4
<b>Storage Instruction</b>	Store at -20°C or lower. Aliquot to avoid repeated freezing and thawing.

## Applications

- Western Blot (Transfected lysate)

Western Blot analysis of NBR1 expression in transfected 293T cell line by NBR1 monoclonal antibody (M05), clone 5C3.

Lane 1: NBR1 transfected lysate(107.4 KDa).

Lane 2: Non-transfected lysate.

[Protocol Download](#)

- Western Blot (Recombinant protein)

[Protocol Download](#)

- Sandwich ELISA (Recombinant protein)

Detection limit for recombinant GST tagged NBR1 is approximately 0.03ng/ml as a capture antibody.

[Protocol Download](#)

- ELISA

- RNAi Knockdown (Antibody validated)

Western blot analysis of NBR1 over-expressed 293 cell line, cotransfected with NBR1 Validated Chimera RNAi ( Cat # H00004077-R01V ) (Lane 2) or non-transfected control (Lane 1). Blot probed with NBR1 monoclonal antibody (M05), clone 5C3 (Cat # H00004077-M05 ). GAPDH ( 36.1 kDa ) used as specificity and loading control.

[Protocol Download](#)

## Gene Info — NBR1

Entrez GeneID [4077](#)

GeneBank Accession# [NM\\_005899](#)

Protein Accession# [NP\\_005890](#)

Gene Name NBR1

Gene Alias 1A1-3B, KIAA0049, M17S2, MIG19

Gene Description neighbor of BRCA1 gene 1

Omim ID [166945](#)

Gene Ontology [Hyperlink](#)

**Gene Summary** The protein encoded by this gene was originally identified as an ovarian tumor antigen monitored in ovarian cancer. The encoded protein contains a B-box/coiled coil motif, which is present in many genes with transformation potential, but the function of this protein is unknown. This gene is located on a region of chromosome 17q21.1 that is in close proximity to tumor suppressor gene BRCA1. Three alternatively spliced variants encoding the same protein have been identified for this gene. [provided by RefSeq]

**Other Designations** membrane component, chromosome 17, surface marker 2 (ovarian carcinoma antigen CA125)|migration-inducing protein 19

## Publication Reference

- [The p38-activated ER stress-ATF6 \$\alpha\$  axis mediates cellular senescence.](#)

Kim HS, Kim Y, Lim MJ, Park YG, Park SI, Sohn J.

FASEB Journal 2018 Sep; fj201800836R.

Application: WB-Tr, Human, MCF-7 cells

## Disease

- [Tobacco Use Disorder](#)