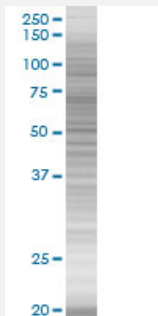


EPCAM 293T Cell Transient Overexpression Lysate(Denatured)

Catalog # H00004072-T02

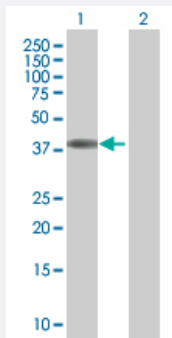
Size 100 uL

Applications



SDS-PAGE Gel

EPCAM transfected lysate.



Western Blot

Lane 1: EPCAM transfected lysate (34.9 KDa)

Lane 2: Non-transfected lysate.

Specification

Transfected Cell Line 293T

Plasmid pCMV-TACSTD1 full-length

Host Human

Theoretical MW (kDa) 34.9

Quality Control Testing Transient overexpression cell lysate was tested with Anti-EPCAM antibody ([H00004072-B02](#)) by Western Blots.
 SDS-PAGE Gel
 EPCAM transfected lysate.
 Western Blot
 Lane 1: EPCAM transfected lysate (34.9 KDa)
 Lane 2: Non-transfected lysate.

Storage Buffer	1X Sample Buffer (50 mM Tris-HCl, 2% SDS, 10% glycerol, 300 mM 2-mercaptoethanol, 0.01% Bromophenol blue)
Storage Instruction	Store at -80°C. Aliquot to avoid repeated freezing and thawing.

Applications

- Western Blot

Gene Info — EPCAM

Entrez GeneID	4072
GeneBank Accession#	NM_002354.1
Protein Accession#	-
Gene Name	EPCAM
Gene Alias	17-1A, 323/A3, CD326, CO-17A, CO17-1A, EGP, EGP-2, EGP34, EGP40, ESA, Ep-CAM, GA733-2, HEA125, KS1/4, KSA, M4S1, MH99, MIC18, MK-1, MOC31, TACST-1, TACSTD1, TROP1, hEGP-2
Gene Description	epithelial cell adhesion molecule
Omim ID	185535
Gene Ontology	Hyperlink
Gene Summary	This gene encodes a carcinoma-associated antigen and is a member of a family that includes at least two type I membrane proteins. This antigen is expressed on most normal epithelial cells and gastrointestinal carcinomas and functions as a homotypic calcium-independent cell adhesion molecule. The antigen is being used as a target for immunotherapy treatment of human carcinomas. Mutations in this gene result in congenital tufting enteropathy. [provided by RefSeq]
Other Designations	adenocarcinoma-associated antigen carcinoma-associated antigen GA733-2 human epithelial glycoprotein-2 membrane component, chromosome 4, surface marker (35kD glycoprotein) tumor-associated calcium signal transducer 1

Disease

- [Genetic Predisposition to Disease](#)
- [Ovarian Neoplasms](#)