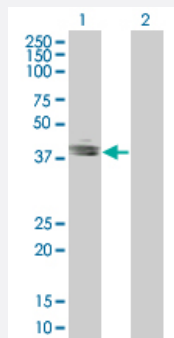


EPCAM 293T Cell Transient Overexpression Lysate(Denatured)

Catalog # H00004072-T01

Size 100 uL

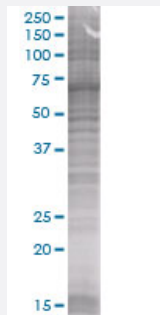
Applications



Western Blot

Lane 1: EPCAM transfected lysate (34.54 kDa)

Lane 2: Non-transfected lysate.



SDS-PAGE Gel

EPCAM transfected lysate.

Specification

Transfected Cell Line 293T

Plasmid pCMV-TACSTD1 full-length

Host Human

Theoretical MW (kDa) 34.65

Quality Control Testing Transient overexpression cell lysate was tested with Anti-EPCAM antibody ([H00004072-B01](#)) by Western Blots.
Western Blot
Lane 1: EPCAM transfected lysate (34.54 kDa)
Lane 2: Non-transfected lysate.
SDS-PAGE Gel
EPCAM transfected lysate.

| | |
|---------------------|---|
| Storage Buffer | 1X Sample Buffer (50 mM Tris-HCl, 2% SDS, 10% glycerol, 300 mM 2-mercaptoethanol, 0.01% Bromophenol blue) |
| Storage Instruction | Store at -80°C. Aliquot to avoid repeated freezing and thawing. |

Applications

- Western Blot

Gene Info — EPCAM

| | |
|---------------------|---|
| Entrez GeneID | 4072 |
| GeneBank Accession# | BC014785 |
| Protein Accession# | AAH14785 |
| Gene Name | EPCAM |
| Gene Alias | 17-1A, 323/A3, CD326, CO-17A, CO17-1A, EGP, EGP-2, EGP34, EGP40, ESA, Ep-CAM, GA733-2, HEA125, KS1/4, KSA, M4S1, MH99, MIC18, MK-1, MOC31, TACST-1, TACSTD1, TROP1, hEGP-2 |
| Gene Description | epithelial cell adhesion molecule |
| Omim ID | 185535 |
| Gene Ontology | Hyperlink |
| Gene Summary | This gene encodes a carcinoma-associated antigen and is a member of a family that includes at least two type I membrane proteins. This antigen is expressed on most normal epithelial cells and gastrointestinal carcinomas and functions as a homotypic calcium-independent cell adhesion molecule. The antigen is being used as a target for immunotherapy treatment of human carcinomas. Mutations in this gene result in congenital tufting enteropathy. [provided by RefSeq] |
| Other Designations | adenocarcinoma-associated antigen carcinoma-associated antigen GA733-2 human epithelial glycoprotein-2 membrane component, chromosome 4, surface marker (35kD glycoprotein) tumor-associated calcium signal transducer 1 |

Disease

- [Genetic Predisposition to Disease](#)
- [Ovarian Neoplasms](#)