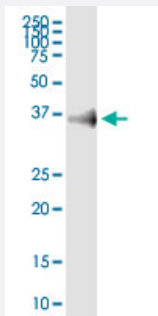


EPCAM (Human) IP-WB Antibody Pair

Catalog # H00004072-PW2

Size 1 Set

Applications



Immunoprecipitation of EPCAM transfected lysate using rabbit polyclonal anti-EPCAM and Protein A Magnetic Bead ([U0007](#)), and immunoblotted with mouse purified polyclonal anti-EPCAM.

Specification

Product Description	This IP-WB antibody pair set comes with one antibody for immunoprecipitation and another to detect the precipitated protein in western blot.
Reactivity	Human
Quality Control Testing	Immunoprecipitation-Western Blot (IP-WB) Immunoprecipitation of EPCAM transfected lysate using rabbit polyclonal anti-EPCAM and Protein A Magnetic Bead (U0007), and immunoblotted with mouse purified polyclonal anti-EPCAM.
Supplied Product	Antibody pair set content: 1. Antibody pair for IP: rabbit polyclonal anti-EPCAM (300 ul) 2. Antibody pair for WB: mouse purified polyclonal anti-EPCAM (50 ug)
Storage Instruction	Store reagents of the antibody pair set at -20°C or lower. Please aliquot to avoid repeated freeze thaw cycle. Reagents should be returned to -20°C storage immediately after use.

Applications

- Immunoprecipitation-Western Blot

[Protocol Download](#)

Gene Info — EPCAM

Entrez GeneID	4072
Gene Name	EPCAM
Gene Alias	17-1A, 323/A3, CD326, CO-17A, CO17-1A, EGP, EGP-2, EGP34, EGP40, ESA, Ep-CAM, GA733-2, HEA125, KS1/4, KSA, M4S1, MH99, MIC18, MK-1, MOC31, TACST-1, TACSTD1, TROP1, hEGP-2
Gene Description	epithelial cell adhesion molecule
Omim ID	185535
Gene Ontology	Hyperlink
Gene Summary	<p>This gene encodes a carcinoma-associated antigen and is a member of a family that includes at least two type I membrane proteins. This antigen is expressed on most normal epithelial cells and gastrointestinal carcinomas and functions as a homotypic calcium-independent cell adhesion molecule. The antigen is being used as a target for immunotherapy treatment of human carcinomas. Mutations in this gene result in congenital tufting enteropathy. [provided by RefSeq]</p>
Other Designations	adenocarcinoma-associated antigen carcinoma-associated antigen GA733-2 human epithelial glycoprotein-2 membrane component, chromosome 4, surface marker (35kD glycoprotein) tumor-associated calcium signal transducer 1

Disease

- [Genetic Predisposition to Disease](#)
- [Ovarian Neoplasms](#)