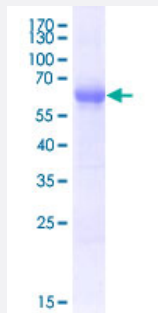


EPCAM (Human) Recombinant Protein

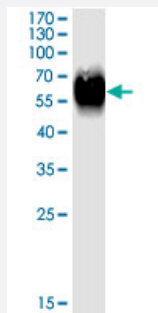
Catalog # H00004072-H03

Size 25 ug

Applications



SDS-PAGE Gel



Western Blot

Specification

Product Description	Purified EPCAM (NP_002345.1 24 a.a. - 265 a.a.) human recombinant protein with His-Flag-StreptII tag at N-terminus expressed in human cells.
Transfected Cell Line	Human HEK293H cells
Sequence	QEECV CENYKLAVNCFVNNNRQCQCTSVGAQNTVICSKLAAKCLVMKAEMNGSKLGRRAKPEG ALQNDGLYDPDCDESGLFKAKQCNGTSTCWCVNTAGVRRTDKDEITCSERVRTYWIIILKHKA REKPYDSKSLRTALQKEITTRYQLDPKFITSILYENNVITIDLQNSSQKTQNDVDIADVAYYFEKDKV GESLFHSHKMDLTVNGEQLDLDPGQTLIYVDEKAPEFSMQGLK
Host	Human
Theoretical MW (kDa)	52.69
Form	Liquid

Preparation Method	Transfection of pSuper-EPCAM plasmid into HEK293H cell, and the expressed protein was purified by protein A.
Purification	Protein A purification
Concentration	>= 10 ug/ml
Quality Control Testing	SDS-PAGE and Western Blot SDS-PAGE Gel Western Blot
Storage Buffer	In PBS.
Storage Instruction	Store at -80°C. Aliquot to avoid repeated freezing and thawing.

Applications

- Western Blot
- Enzyme-linked Immunoabsorbent Assay
- SDS-PAGE
- Protein Interaction

Gene Info — EPCAM

Entrez GeneID	4072
GeneBank Accession#	NM_002354.1
Protein Accession#	NP_002345.1
Gene Name	EPCAM
Gene Alias	17-1A, 323/A3, CD326, CO-17A, CO17-1A, EGP, EGP-2, EGP34, EGP40, ESA, Ep-CAM, GA7 33-2, HEA125, KS1/4, KSA, M4S1, MH99, MIC18, MK-1, MOC31, TACST-1, TACSTD1, TROP 1, hEGP-2
Gene Description	epithelial cell adhesion molecule
Omim ID	185535
Gene Ontology	Hyperlink

Gene Summary

This gene encodes a carcinoma-associated antigen and is a member of a family that includes at least two type I membrane proteins. This antigen is expressed on most normal epithelial cells and gastrointestinal carcinomas and functions as a homotypic calcium-independent cell adhesion molecule. The antigen is being used as a target for immunotherapy treatment of human carcinomas. Mutations in this gene result in congenital tufting enteropathy. [provided by RefSeq]

Other Designations

adenocarcinoma-associated antigen|carcinoma-associated antigen GA733-2|human epithelial glycoprotein-2|membrane component, chromosome 4, surface marker (35kD glycoprotein)|tumor-associated calcium signal transducer 1

Disease

- [Genetic Predisposition to Disease](#)
- [Ovarian Neoplasms](#)