

DNAxPAb

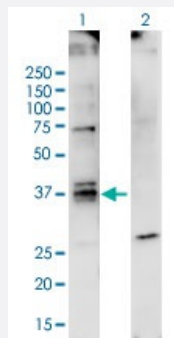
Hard-to-Find
Antibody

TM4SF1 DNAxPab

Catalog # H00004071-W01P

Size 100 ug

Applications



Western Blot (Transfected lysate)

Western Blot analysis of TM4SF1 expression in transfected 293T cell line by TM4SF1 DNAxPab polyclonal antibody.

Lane 1: TM4SF1 transfected lysate(35.53 KDa).

Lane 2: Non-transfected lysate.

Specification

Product Description

Rabbit polyclonal antibody raised against a partial-length human TM4SF1 DNA using DNAx™ Immune technology.

Technology

[DNAx™ Immune](#)

Immunogen

TM4SF1 (NP_055035.1, 31 a.a. ~ 161 a.a) partial-length human DNA

Sequence

PNGETKYASENHLSRFVWFFSGMGGGLMLLP AFVFIGLEQDDCCGCCGHENCGKRCAMLSSV
LAALIGIAGSGYCVIVAALGLAEGPLCLDSLQWNYTFASTEGQYLLDTSTWSECTEPKHIVEWNV
S

Host

Rabbit

Reactivity

Human

Purification

Protein A

Quality Control Testing

Antibody reactive against mammalian transfected lysate.

Storage Buffer

In 1x PBS, pH 7.4

Storage Instruction

Store at -20°C or lower. Aliquot to avoid repeated freezing and thawing.

Applications

- Western Blot (Transfected lysate)

Western Blot analysis of TM4SF1 expression in transfected 293T cell line by TM4SF1 DNAxPab polyclonal antibody.

Lane 1: TM4SF1 transfected lysate(35.53 KDa).

Lane 2: Non-transfected lysate.

[Protocol Download](#)

- Immunofluorescence (Transfected cell)

- Flow Cytometry (Transfected cell)

Gene Info — TM4SF1

Entrez GeneID [4071](#)

GeneBank Accession# [NM_014220.2](#)

Protein Accession# [NP_055035.1](#)

Gene Name TM4SF1

Gene Alias H-L6, L6, M3S1, TAAL6

Gene Description transmembrane 4 L six family member 1

Omim ID [191155](#)

Gene Ontology [Hyperlink](#)

Gene Summary The protein encoded by this gene is a member of the transmembrane 4 superfamily, also known as the tetraspanin family. Most of these members are cell-surface proteins that are characterized by the presence of four hydrophobic domains. The proteins mediate signal transduction events that play a role in the regulation of cell development, activation, growth and motility. This encoded protein is a cell surface antigen and is highly expressed in different carcinomas. [provided by RefSeq]

Other Designations membrane component, chromosome 3, surface marker 1|transmembrane 4 superfamily member 1|tumor-associated antigen L6