

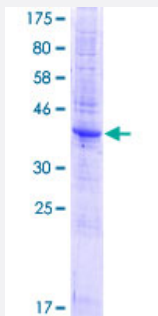
Full-Length

TM4SF1 (Human) Recombinant Protein (P01)

Catalog # H00004071-P01

Size 25 ug, 10 ug

Applications



Specification

Product Description

Human TM4SF1 full-length ORF (NP_055035.1, 1 a.a. - 202 a.a.) recombinant protein with GST-tag at N-terminal.

Sequence

MCYGKCARCIGHSLVGLALLCIAANILLYFPNGETKYASENHLSRFVWFFSGIVGGGLLMLLPAFVFI
GLEQDDCCGCCGHENCGKRCAMLSSVLAALIGIAGSGYCVVAALGLAEGPLCLDSLQWNYTF
ASTEGQYLLDTSTWSECTEPKHIVEWNVSLFSILLALGGIEFILCLIQVINGVLGGICGFCCSHQQQY
DC

Host

Wheat Germ (in vitro)

Theoretical MW (kDa)

48

Interspecies Antigen Sequence

Mouse (78); Rat (80)

Preparation Method

[in vitro wheat germ expression system](#)

Purification

Glutathione Sepharose 4 Fast Flow

Quality Control Testing

12.5% SDS-PAGE Stained with Coomassie Blue.

Storage Buffer

50 mM Tris-HCl, 10 mM reduced Glutathione, pH=8.0 in the elution buffer.

Storage Instruction

Store at -80°C. Aliquot to avoid repeated freezing and thawing.

Note

Best use within three months from the date of receipt of this protein.

Applications

- Enzyme-linked Immunoabsorbent Assay
- Western Blot (Recombinant protein)
- Antibody Production
- Protein Array

Gene Info — TM4SF1

Entrez GeneID [4071](#)

GeneBank Accession# [NM_014220.2](#)

Protein Accession# [NP_055035.1](#)

Gene Name TM4SF1

Gene Alias H-L6, L6, M3S1, TAAL6

Gene Description transmembrane 4 L six family member 1

Omim ID [191155](#)

Gene Ontology [Hyperlink](#)

Gene Summary The protein encoded by this gene is a member of the transmembrane 4 superfamily, also known as the tetraspanin family. Most of these members are cell-surface proteins that are characterized by the presence of four hydrophobic domains. The proteins mediate signal transduction events that play a role in the regulation of cell development, activation, growth and motility. This encoded protein is a cell surface antigen and is highly expressed in different carcinomas. [provided by RefSeq]

Other Designations membrane component, chromosome 3, surface marker 1|transmembrane 4 superfamily member 1|tumor-associated antigen L6