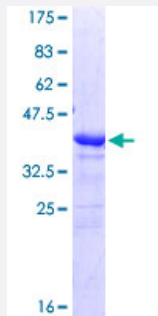


TACSTD2 (Human) Recombinant Protein (Q01)

Catalog # H00004070-Q01

Size 25 ug, 10 ug

Applications



Specification

Product Description	Human TACSTD2 partial ORF (NP_002344, 31 a.a. - 140 a.a.) recombinant protein with GST-tag at N-terminal.
Sequence	QDNCTCPTNKMTVCSPDGPGGRCQCRALGSGMAVDCSTLTSKCLLLKARMSAPKNARTLVRPS EHALVDNDGLYDPDCDPEGRFKARQCNQTSVCWCVNSVGVRRTDKGD
Host	Wheat Germ (in vitro)
Theoretical MW (kDa)	37.84
Interspecies Antigen Sequence	Mouse (83); Rat (83)
Preparation Method	in vitro wheat germ expression system
Purification	Glutathione Sepharose 4 Fast Flow
Quality Control Testing	12.5% SDS-PAGE Stained with Coomassie Blue.
Storage Buffer	50 mM Tris-HCl, 10 mM reduced Glutathione, pH=8.0 in the elution buffer.
Storage Instruction	Store at -80°C. Aliquot to avoid repeated freezing and thawing.
Note	Best use within three months from the date of receipt of this protein.

Applications

- Enzyme-linked Immunoabsorbent Assay
- Western Blot (Recombinant protein)
- Antibody Production
- Protein Array

Gene Info — TACSTD2

Entrez GeneID [4070](#)

GeneBank Accession# [NM_002353](#)

Protein Accession# [NP_002344](#)

Gene Name TACSTD2

Gene Alias EGP-1, GA733, GA733-1, M1S1, TROP2

Gene Description tumor-associated calcium signal transducer 2

Omim ID [137290](#) [204870](#)

Gene Ontology [Hyperlink](#)

Gene Summary This intronless gene encodes a carcinoma-associated antigen defined by the monoclonal antibody GA733. This antigen is a member of a family including at least two type I membrane proteins. It transduces an intracellular calcium signal and acts as a cell surface receptor. Mutations of this gene result in gelatinous drop-like corneal dystrophy, an autosomal recessive disorder characterized by severe corneal amyloidosis leading to blindness. [provided by RefSeq]

Other Designations OTTHUMP00000011755|epithelial glycoprotein-1|membrane component, chromosome 1, surface marker 1 (40kD glycoprotein, identified by monoclonal antibody GA733)